

BEULAVILLE



October 24, 2015  
Beulaville, NC

Morris

# ELCX

Again this year Edwards Land and Cattle Family is delighted to invite you to our Annual Fall Production Sale. The sale will be held down on the farm at our sale located at 314 Willard Edwards Road, Beulaville, North Carolina. We will be offering you some of the best quality genetics in the Limousin breed, along with very high quality Angus. At Edwards Land and Cattle we are committed to producing the kind of genetics that will be useful and profitable in your operations. Our genetics have been proven to be very effective in commercial herds as well as pure bred cattle.

Our family takes great pride in our cattle and would only like to provide you with quality Limousin, Angus and Lim-flex genetics that will work in any cattle operation. Through the years we have made our chief goal to create a long term relationship with our customers; this is why we only provide you with our finest stock. All of our cattle sale under the standard guarantee of the North American Limousin Foundation. If you have any questions pertaining to any of the genetics or any other thing about our cattle please feel free to give us a call. If you are in need of financing or trucking arrangements we will gladly assist you. If you are unable to attend please feel free to call us or any of the sale management to assist you on sale day.

An added feature in this years' sale will be a raffle for a chance to win a heifer to be kept by the winner or to be auctioned at the sale. The heifer is featured in this catalog as ELCX Blogger 379B. Proceeds from the sale of the raffle will be gifted to a farmer and rancher who was severely burned in a farming accident resulting in double ambition. This will be an excellent opportunity to help a family while taking a chance at winning a great heifer.

We will hold a reception and cattle viewing at the sale barn on Friday night beginning around 5:30 PM. The Edwards Land and Cattle family will provide you with a down home southern barbecue on the day of the sale at 11:30 AM. The whole family looks forward to seeing you. If you need any help with directions or accommodations please don't hesitate to give us a call.

Hope to see you October 24th.

Dexter

Dexter and Nicholas Edwards  
314 Willard Edwards Road • Beulaville, NC 28518  
910.298.3012 • FAX: 910.298.6155 • edwardslimousin@earthlink.net  
Nicholas, cell: 910.290.1424 • Nicholas, email: npedwards07@yahoo.com



**SCHEDULE OF EVENTS ...**

Friday, October 23rd

Noon Cattle available for viewing  
Refreshments will be available

Saturday, October 24th

8:00 a.m. Cattle available for viewing  
11:30 a.m. Complementary BBQ lunch served  
12:30 p.m. Sale starts (E.S.T.)

**SALE DAY PHONES ...**

Dexter Edwards .....910.290.0467  
Nicholas Edwards .....910.290.1424  
Randy Ratliff .....615.330.2735

**AUCTIONEER ...** Cody Lowderman

**ACCOMMODATIONS ...**

The Country Squire Vintage Inn & Winery .....910.296.1727  
748 NC Hwy 24&50 Warsaw, NC 28398 • www.countrysquireinn.com  
Quality Inn of Warsaw .....910.293.2800  
2676 West NC 24, Warsaw, NC, US, 28398  
Sleep Inn & Suites .....910.47.-0099  
129 Circuit Lane, Jacksonville, NC 28546

**SALE ORDER & SUPPLEMENTAL**

**INFORMAITON ...** Friday, October 23rd the sale order and supplemental information will be posted at [www.RRMktg.com](http://www.RRMktg.com) for your convenience.

**GUARANTEE ...** All cattle sell under the standard guarantee of the North American Limousin Foundation.

**FINANCING ...** For financing options please contact Dexter Edwards at 910.290.0467, Nicholas Edwards at 910.290.1424 or Randy Ratliff at 615.330.2735.

**TRUCKING ...** A trucking company will be on hand sale day to assist with any trucking that might be needed. Edwards Land & Cattle Co. will see to it that cattle will be delivered to several central locations to accommodate anyone that lives throughout the United States and Canada.

**TERMS & CONDITIONS ...** Terms of the sale are cash unless satisfactory credit arrangements have been made prior to the sale. A representative will be on hand sale day if your wishes are to insure your purchases. Please note: The sale manager is only an agent for the seller and has no responsibility other than those involved in conducting the sale. All persons who attend the sale do so at their own risk. Neither the sale manager nor Edwards Land & Cattle Co. assume liability, legal or otherwise for, any accidents which may occur.

**DRIVING DIRECTIONS ...**

*From Raleigh-Durham International Airport (RDU) to Edwards Land and Cattle Sale Facility take interstate I 40 east towards Wilmington/Benson. Continue on 40 East until exit 373 (Magnolia/Kenansville) turn left on 903 towards Kenansville, stay on 903 until intersection of Hwy 24. Take Hwy 24 east towards Beulaville. Stay on hwy 24 through Beulaville; go approximately 6 miles to Willard Edwards Rd on the left. The Sale Facility will be located approximately 1.5 miles on the left.*

*From Albert Ellis Airport (OAJ) take left onto NC HWY 111 to Haw Branch Rd. Take Haw Branch rd to Hwy 24 west. Willard Edwards Rd will be approximately 4 miles on the right. The Sale Facility will be located approximately 1.5 miles on the left.*

*From Wilmington International Airport (ILM) take I40West to exit 385 (Wallace/Beulaville). Take right towards Beulaville on Hwy NC-41. Travel 18 miles to intersection of 41/24 take hwy 24 east approximately 6 miles to Willard Edwards Rd on the left. The Sale Facility will be located approximately 1.5 miles on the left.*

**PAYMENTS ...** All cattle must be paid for immediately following the conclusion of the sale. R & R Marketing Company will now be accepting credit cards the day of the sale.

**SIGHT UNSEEN PURCHASE AGREEMENT ...** If you are unable to attend the sale and want to speak with Dexter or Nicholas Edwards or Randy Ratliff then please don't hesitate to call. They will provide you with a complete satisfaction guarantee for the have purchased. If within 2 weeks from the date of the sale you are not satisfied with your purchased and how they were described to you then the Edwards family will gladly take the animal back.

**SALE CONSULTANTS ...**

Mark Smith .....515.229.5227  
Bill Helton .....256.962.0256  
Skyler Davis .....770.307.7036

**SALE MANAGEMENT ...**

**R&R**  
**MARKETING**  
Randall O. Ratliff  
615.330.2735  
Randy@RRMktg.com  
www.RRMktg.com  
1212 Laurel St., #1614, Nashville, TN 37203  
(L#2845)

If you need assistance with your purchases or want to discuss the genetics selling then please feel free to contact R & R Marketing Company. As a paid marketing agent for Edwards Land & Cattle we take pride in the opportunity to work closely with this program. We can assist you with your phone order and/or handle your bid in the most confidential manner. Email, call or text and we will be more than happy to assist.



**October 24, 2015**  
**Beulaville, NC**

At our Sale Facility, 314 Willard Edwards Rd,  
Beulaville, NC 28518



**Selling 61 Limousin & Limfex  
& 27 Embryos**

6 Herd Sire Prospects

1 Raffle Heifer

33 Proven Donors/Bred Cows/Bred Heifers

21 Cow Calf Pairs

27 Embryos selling as 5 lots

**Selling 9 Purebred Angus**

1 Semen packages

3 Herd Sire prospects

1 Donor

1 Cow Calf Pair

3 Bred females



Video of Lot 1 available at  
[www.facebook.com/EdwardsLandAndCattleCompany](http://www.facebook.com/EdwardsLandAndCattleCompany)  
 or on YouTube ... [www.youtube.be/g63VIVg-P1A](http://www.youtube.be/g63VIVg-P1A)



**Lot 1 ELCX Benchwarmer 363B**

Lim-Flex (25) Bull    HP/HB    ELCX 363B    LFM 2059017    01.03.14

	CED	BW	WW	YW	MA	CEM	SC	ST	DOC	CV	RE	YG	MS	\$MTI
EPD	17	-2.4	64	108	24	10	1.27	17	26	30	0.09	0.15	0.75	75.16
%Rank	1	2	55	20	60	3	2	30	25	45	>95	>95	>95	2

S A F FOCUS O FER  
**MYTTY IN FOCUS**  
 MYTTY COUNTESS 906

JCL LODESTAR 27L  
**SSTO SADIE 6854S**  
 THOMAS LUCY ROSE 9509

S A F FAME  
 G D AR FOREVER LADY 246  
 SITZ ALLIANCE 6595  
 BALDRIDGE COUNTESS 357  
 HUNTS HI-LITER 245G  
 LOGAN'S CHEERLEADER 280G  
 SITZ TRAVELER 8180  
 THOMAS LUCY ROSE 4067

- Homozygous polled and homozygous black
- ELCX Benchwarmer 363B could be one of the very finest herd sire prospects to ever represent the ELCX prefix. He is a 25% Lim-Flex son of MYTTY In Focus that is moderate in his frame score, very easy in his condition and has an over abundance of rib shape and volume
- His dam SSTO Sadie 6854S has proven over the years to be one of the finest producers in the ELCX program. She is sired by the multiple trait leading sire JCL Lodestar 27L and from a proven purebred Angus female
- This young beef bull ranks in the top 5% of the breed for birth weight, 1% for CEM, top 3% for scrotal and top 2% for marbling and \$MTI
- BW: 72 lbs.; WW: 698 lbs.; YW: 1,258 lbs.



LOT 2



LOT 3



Videos of Lot 2 & 3 available at  
[www.facebook.com/EdwardsLandAndCattleCompany](https://www.facebook.com/EdwardsLandAndCattleCompany) or on YouTube ...  
<https://youtu.be/mKTMsXVJ420> and <https://youtu.be/ihgcvUZ6Cag>



WLR Tainted Love, dam of Lots 2 & 3.

## 2 ELCX Bacardi 427B ET

Lim-Flex (50) Bull	HP/Black	ELCX 427B	LFM 2072490	10.04.14										
CED	BW	WW	YW	MA	CEM	SC	ST	DOC	CW	RE	YG	MS	SMTI	
EPD	12	0	65	101	28	9	0.8	11	12	30	0.76	-0.15	0.21	58.86
%Rank	15	20	50	40	25	10	25	90	80	45	10	45	30	30

S A V BISMARCK 5682  
**S A V BRILLIANCE 8077**  
 S A V BLACKCAP MAY 5270

WULFS URBAN COWBOY 2149U  
**WLR TAINTED LOVE 746X**  
 MAGS PHANTOMS PRIZE

G A R GRID MAKER  
 S A V ABIGALE 0451  
 S A V 8180 TRAVELER 004  
 S A V MAY 2420

WULFS REALTOR 1503R  
 WULFS MEADOW GRASS 2149M  
 GPFF BLAQUE RULON  
 ALCM KOOL TUNES

- Black and homozygous polled
- This SAV Brilliance son is from the many times show champion female WLR Tainted Love
- We love the over all mass, power and performance found in this beef bull
- He is structurally sound and is very soft in his pasterns. We love his heaviness of bone and over all power and performance
- This homozygous polled bull represents a very strong and powerful mating and is one that will bring creditability and promotion to any program at any level
- This 50% Lim-Flex herd sire combines the best of both worlds-he has the rib shape and capacity of the Angus and the heaviness of muscle and power of the Limousin
- BW: 70 lbs.; WW: 618 lbs.; YW: 1,112 lbs.

## 3 ELCX Budget 408B ET

Lim-Flex (50) Bull	HP/Black	ELCX 408B	LFM 2072488	04.02.14										
CED	BW	WW	YW	MA	CEM	SC	ST	DOC	CW	RE	YG	MS	SMTI	
EPD	-2	3.5	74	124	26	0	-	-	14	49	0.74	0.01	0.34	64.93
%Rank	>95	90	15	2	40	>95	-	-	70	2	15	90	15	15

S A V HERITAGE 6295  
**S A V HARVESTOR 0338**  
 S A V EMBLYNETTE 7749

WULFS URBAN COWBOY 2149U  
**WLR TAINTED LOVE 746X**  
 MAGS PHANTOMS PRIZE

CAR DUKE 104  
 S A V BLACKCAP MAY 4136  
 S A V NET WORTH 4200  
 SAV EMBLYNETTE DIAMOND 63  
 WULFS REALTOR 1503R  
 WULFS MEADOW GRASS 2149M  
 GPFF BLAQUE RULON  
 ALCM KOOL TUNES

- Black and homozygous polled
- This 50% Lim-Flex herd sire prospect is one massive herd sire prospect and one that we think you will really appreciate on sale day
- He is sired by the big numbered and powerful purebred Angus beef bull SAV Harvestor and from the many times show champion and now big league donor WLR Tainted Love 746X. She is owned with our good friends at Heart Felt Farms and Wies Limousin. Her honors in the show ring have been ...
  - 2010 Missouri State Fair Res Div Purebred Female
  - 2010 Tulsa State Fair Grand Champion Female
  - 2010 American Royal Division 1 Champion
  - 2010 North American Reserve Grand Champion Female
- This bull is a true performance sire ranking in the top 10% of the breed for WW, top 2% for YW and top 1% for carcass weight
- BW: 70 lbs.; WW: 682 lbs.; YW: 1,197 lbs.



Morris



Video of Lot 4 available at  
[www.facebook.com/EdwardsLandAndCattleCompany](https://www.facebook.com/EdwardsLandAndCattleCompany)  
 or on YouTube ... <https://youtu.be/8U1Mf9Oj9pg>

LOT 4

SBLX Underthecovers 201U, dam of Lot 4.

**4 ELCX Bushwacked 412B**

Lim-Flex (50) Bull	HP/DB	ELCX 412B	LFM 2059013	04.03.14										
EPD	CED	BW	WW	YW	MA	CEM	SC	ST	DOC	CW	RE	YG	MS	SMTI
%Rank	12	-0.2	60	98	24	9	0.15	12	13	28	0.33	0.01	0.75	75.39
	15	20	75	45	60	10	95	85	75	50	80	90	1	2

BT CROSSOVER 758N  
**MAGS WINSTON**  
 MAGS STRAWBERRY  
 G A R PREDESTINED  
**SBLX UNDERTHECOVERS 201U**  
 ELMW GINNIE P58G

C A FUTURE DIRECTION 532I  
 BT ROYAL PRIDE 237G  
 EXLR NEW GENERATION 071M  
 MAGS FRUITFUL 487M  
 B/R NEW DESIGN 036  
 G A R EXT 4206  
 TCDT MR T.D'S POWER PACK  
 ELMW POLLED ECSTASY 67E

- Double black and homozygous polled
- ELCX Bushwacked 412B is one terrific up and coming herd sire prospect from the heart of the ELCX program
- His sire MAGS Winston, now deceased has become one of the breed's top sires of the entire breed. His daughters are very maternal and easy to maintain. His sons are packed full of muscle with tremendous power and performance behind them
- His dam SBLX Underthecovers 201U is the \$50,000 valued donor for Sugar Bush Cattle, Inc. in Michigan, and Double B in Pennsylvania. She is the prominent daughter of GAR Predestined and from the many times national gold medal dam ELMW Ginnie P58G
- BW: 68 lbs; WW: 668 lbs.; YW: 1,208 lbs.



ELCX Postmaster 208Y,  
sire of Lot 5.

## 5 ELCX Burr Rabbit 115B

Lim-Flex (51) Bull      HP/DB      ELCX 115B      LFM 2057477      03.15.14

	CE	BW	WW	YW	MA	CEM	SC	ST	DOC	CW	RE	YG	MS	\$MTI
EPD	12	0.6	65	106	20	8	0.41	-	-	34	0.34	0.07	0.53	68.55
%Rank	15	30	50	25	90	15	70	-	-	25	80	>95	5	10

MAGS WINSTON  
**ELCX POSTMASTER 208Y**  
SSTO SADIE 6854S

EXLR UNEQUALED 051U  
**ELCX BLACKCAT 115 Y**  
EXLR BLACKCAP 115W

BT CROSSOVER 758N  
MAGS STRAWBERRY  
JCL LODESTAR 27L  
THOMAS LUCY ROSE 9509  
CARROUSELS PURE POWER  
EXLR REBECA 1019P  
EXAR PRIME STAR 70104  
EXLR BLACKCAP 8030T

- Double black and homozygous polled
- This 51% Lim-Flex beef bull is sired by ELCX Postmaster 208Y, a maternal brother to lot 1 in this sale. He is a son of MAGS Winston and from the elite Lim-Flex donor cow and daughter of JCL Lodestar 27L, SSTO Sadie 6854S
- His dam is a daughter of EXLR Unequeled 051U
- This homozygous polled Lim-Flex bull ranks in the breeds top 10% for CEM, marbling and \$MTI
- We admire the length of body, level hip and extra amount of thickness that he has
- BW: 65 lbs.; WW: 605 lbs.; YW: 1,089 lbs.

## 6 APLI Full House 27B

Lim-Flex (71) Bull      HP/DB      APLI 27B      LFM 2051725      03.29.14

	CE	BW	WW	YW	MA	CEM	SC	ST	DOC	CW	RE	YG	MS	\$MTI
EPD	8	0.0	68	104	26	60	4	0.55	11	31	0.81	-0.20	0.03	53.27
%Rank	50	20	35	30	40	80	60	85	40	10	30	55	65	50

WULFS SHOP TALK 2332S  
**JLWM JOKER 9147W**  
JLWM LA RITA ROUGE 4101P

S A V POINEER 7301  
**APLI RUMOR 41Y**  
CLLL BLACK POWER 613W

CARROUSELS PURE POWER  
WULFS MYRENE 2332M  
AUTO BLACK DAKOTA 129J  
EXLR 402J  
SAV FINAL ANSWER 0035  
S A V BLACKBIRD 5297  
CARROUSELS PURE POWER  
TUBB BENCH 999L

- Double black and homozygous polled
- This 71% Lim-Flex herd sire prospect is sired by the Wulf's Shop Talk 2332S son JLWM Joker 9147W
- His dam is APLI Rumor 41Y, a big numbered daughter of SAV Pioneer
- We admire the amount of muscle and power of this beef bull
- He ranks in the top 10% of the breed for marbling with a .48 and \$MTI with a 66.28



Video of Lot 7 available at  
[www.facebook.com/EdwardsLandAndCattleCompany](https://www.facebook.com/EdwardsLandAndCattleCompany)  
 or on YouTube ... <https://youtu.be/WngSjPmdQIA>



Morris



Morris

## ANGUS SEMEN PACKAGES

### 7 Woodside Rito 4050 of 0M3

Angus Bull	Polled/Black	4050	AAA +18025516	03.01.14										
EPD	CED 9	BW 2.1	WW 58	YW 113	MA 33	CEM 12	SC 0.94	ST -	DOC -	CW 34	RE 0.62	YG 0.07	MS 1.87	SMTI -
%Rank	-	-	-	-	-	-	-	-	-	-	-	-	-	-

C R A BEXTOR 872 5205 608  
**G A R PROPHET**  
 G A R OBJECTIVE 1885

G A R PREDESTINED  
**RITA 0M3 OF RITA 5F56 PRED**  
 RITA 5F56 OF 1198 FD

B A R EXT TRAVELER 205  
 CRA LADY JAYE 608 498 S EASY  
 S S OBJECTIVE T510 0T26  
 G A R 1407 NEW DESIGN 2232  
 B/R NEW DESIGN 036  
 G A R EXT 4206  
 C A FUTURE DIRECTION 5321  
 RITA 1198 OF 2536 RITO 616

- Selling 10 unit semen packages
- Purebred Angus Herd Sire Prospect
- Owned with Woodside Farm, Clear Brook, VA
- Here is one of the biggest numbers purebred Angus bulls in the entire breed
- He offers a 113 for yearling weight, 33 for milking ability, 1.87 for marbling, \$B of 150.57 and REA of .62.
- We admire and appreciate this young Angus bull for his extreme number package along with his unique profile and desirable look. He fits into Edwards Land & Cattle Co. with developing and creating move big numbered purebred Angus and also the creation of powerful Lim-Flex cattle



Lot 8

**ELC B100**

Angus Bull Black/Polled ELC B100 -- 03.19.14

EPD	CED	BW	WW	YW	MA	CEM	SC	ST	DOC	CW	RE	YG	MS	SMTI
12	-0.7	57	103	32	5	0.8	14	5	30	0.63	-0.07	1.4	98.89	
%Rank	-	-	-	-	-	-	-	-	-	-	-	-	-	-

SS OBJECTIVE T510 0T26  
**RITO 7065 OF RITA 5M46 OB**  
 RITA 5M46 OF 2536 PRED

SS TRAVELER 6807 T510  
 S S MISS RITA R011 7R8  
 G A R PREDESTINED  
 G A R PRECISION 2536  
 B/R NEW DESIGN 036  
 G A R EXT 4206  
 BT DIRECTION 65D  
 G A R PRECISION 2536

G A R PREDESTINED  
**44 BLACKCAP 86100**  
 3H SOUTHERN BLACKCAP 2015

- This purebred Angus herd sire prospect is sound structured, soft in his pasterns and moves very well
- He is sired by a son of SS Objective T510 0T26 and from a daughter of B/R Destination 727-928
- He has a 29 for milking ability and 92 for yearling weight
- He has a breed leading 1.03 for marbling and still maintains a .52 for ribeye
- If you are looking for a bull that has the conformation backed with the extreme numbers then here he is
- BW: 65 lbs.; WW: 658 lbs.; YW: 1,185 lbs.



Video of Lot 8 available at  
[www.facebook.com/EdwardsLandAndCattleCompany](http://www.facebook.com/EdwardsLandAndCattleCompany)  
 or on YouTube ... <https://youtu.be/bC7mtgqM4-I>



LOT 8

Lot 9

**ELC Enchant W036**

Angus Bull Black/Polled ELC B036 AAA 18213479 02.28.14

EPD	CED	BW	WW	YW	MA	CEM	SC	ST	DOC	CW	RE	YG	MS	SMTI
-	3.3	51	92	29	-	-	-	-	-	27	0.52	-0.01	1.03	-
%Rank	-	-	-	-	-	-	-	-	-	-	-	-	-	-

SS OBJECTIVE T510 0T26  
**RITO 7065 OF RITA 5M46 OB**  
 RITA 5M46 OF 2536 PRED

SS TRAVELER 6807 T510  
 S S MISS RITA R011 7R8  
 G A R PREDESTINED  
 G A R PRECISION 2536  
 B/R DESTINATION 727  
 B/R BLACKCAP EMPRESS 558  
 B/R NEW DESIGN 036  
 B/R ENCHANTRESS T ERICA 0153

B/R DESTINATION 727-928  
**44 ENCHANTRESS W036**  
 LEMMON ENCHANTRESS N164

- This purebred Angus sire has a marbling of 1.03, ribeye of .52 and a milk number of 29
- He is huge numbered and just as importantly has a very complete conformation and design
- We truly feel he will create a uniform calf crop and he will add numbers, power and performance to any set of cows
- Buy with confidence as this herd sire prospect will certainly make a difference
- BW: 70 lbs.; WW: 594 lbs.; YW: 1,182 lbs.

Lot 10

**ELC B103**

Angus Bull Black/Polled ELC B103 -- 05.04.14

EPD	CED	BW	WW	YW	MA	CEM	SC	ST	DOC	CW	RE	YG	MS	SMTI
15	-0.7	56	100	31	5	0.9	12	8	29	0.62	-0.09	0.49	83.49	
%Rank	-	-	-	-	-	-	-	-	-	-	-	-	-	-

SS OBJECTIVE T510 0T26  
**RITO 7065 OF RITA 5M46 OB**  
 RITA 5M46 OF 2536 PRED

SS TRAVELER 6807 T510  
 S S MISS RITA R011 7R8  
 G A R PREDESTINED  
 G A R PRECISION 2536  
 AAR NEW TREND  
 S V F FOREVER LADY 57D  
 B/R NEW FRONTIER 095  
 B/R PRIMROSE 0108

BOYD NEW DAY 8005  
**B/R PRIMROSE 7103**  
 B/R PRIMROSE 4148

- This son of Rito 7065 of Rita 5M46 Obj is a son of SS Objective and from a daughter of GAR Predestined back to a daughter of GAR Precision
- His dam is a daughter of Boyd New Day 8005 from a daughter of B/R New Frontier back to a daughter of N Bar Emulation EXT
- This bull has a very powerful performance pedigree and with his clean look, excellent structure we are certain he will make an impact in any program at any level
- BW: 72 lbs.; WW: 515 lbs.; YW: 1,010 lbs.



Morris

**11** **ELCX Blogger 379B ET**

Lim-Flex (50) Cow HP/HB ELCX 379B LFF 2080772 01.16.14

	CED	BW	WW	YW	MA	CEM	SC	ST	DOC	CW	RE	YG	MS	SMTI
EPD	11	1.0	69	111	32	7	0.88	-	28	37	1.01	-0.29	0.14	58.43
%Rank	20	40	30	15	10	30	25	-	15	15	20	5	35	30

TC ABERDEEN 759  
**MAGS Y-AXIS**  
 MAGS UAHUKA  
 B C LOOKOUT 7024  
**JLWM MIRANDA 054X**  
 WBBK RED PEPPER 2009M

C R A BEXTOR 872 5205 608  
 BON VIEW DESIGN 208  
 DHVO DEUCE 132R  
 CARROUSELS PINA COLADA  
 O C C LEGEND 616L  
 GIBBET HILL MIGNONNE E37  
 SLDJ POLLED EQUITY  
 LKAS 0099K

**Benefit Raffle - Limousin Heifer - Selling \$50 Tickets.**

**Winner announced 11:30 am on sale day during the Pig Pickin' for all raffle ticket holders**

- P.E. 1.08.15 to 6.01.15 to TW Fire N Ice
- Double black and homozygous polled
- This 50% Lim-Flex heifer is made really well and has a very desirable conformation
- She is sired by the big numbered and prominent sire MAGS Y-Axis, the prominent son of TC Aberdeen from the national champion MAGS Uahuka
- Her dam is a daughter of BC Lookout 7024 from the big numbered donor WBBK Red Pepper 2009M
- She ranks in the top 20% of the breed for ribeye with a 1.01, top 5% for yield grade and top 10% of the breed for milk and total maternal
- Her mating to the big numbered Lim-Flex sire TW Fire N' Ice will be an added bonus to the buyer of the heifer



*Morris*

**12** **SBP Phantasy 6207**

PB Angus Cow Polled/Black 6207 AAA 15627906 08.29.06

	CED	BW	WW	YW	MA	CEM	SC	ST	DOC	CW	RE	YG	MS	SMTI
EPD	8	0.9	40	75	16	11	0.35	-	-	20	0.20	0.02	0.49	-
%Rank	31	37	29	23	22	19	5	-	-	5	5	5	5	-

TWIN VALLEY PRECISION E161  
**BR MIDLAND**  
 BR ROYAL LASS 7036-19  
 N BAR EMULATION EXT  
**SHOULDERBONE PHANTASY 128**  
 CIRCLE G PHANTASY 946  
 G A R PRECISION 1680  
 W C C BLACKCAP C9  
 S A F NEUTRON  
 S A F ROYAL LASS 7036  
 EMULATION N BAR 5522  
 N BAR PRIMROSE 2424  
 B/R NEW DESIGN 036  
 CIRCLE G PHANTASY 7025

- P.E. 12.01.14 to 5.05.15 to MAGS Xyloid
- This purebred Angus female has been a top donor and is one of the true highlights of the sale offering
- She is a daughter of the all-time great donor BR Midland and from a daughter of N Bar Emulation EXT
- This female has been and will continue to producer excellence
- We appreciate her massive foot size, softness in her pasterns, heaviness of bone and her fluid movement
- She has been a true blessing to the ELC purebred Angus division and in an effort to make this sale the best it can be we have decided to let her go



**13 MS RockyButte 355**

Angus Cow	Polled/Black	355	AAA 17668969	09.27.13										
EPD	CED 9	BW 1.3	WW 52	YW 96	MA 23	CEM 10	SC -	ST -	DOC -	CW 37	RE 0.59	YG 0.02	MS 0.59	\$MTI -
%Rank	5	5	5	5	5	5	-	-	-	5	5	5	5	-

SITZ UPWARD 307R  
**EXAR UPSHOT 0562B**  
 EXAR BARBARA T020

MYTTY IN FOCUS  
**MS ROCKY PINNACLE 0825**  
 FOX DEN MISS 594

CONNELY ONWARD  
 SITZ HENRIETTA PRIDE 81M  
 ISU IMAGING Q 9111  
 LCC MC HENRY BARBAR MG382  
 S A F FOCUS OF E R  
 MYTTY COUNTLESS 906  
 AA RIGHT TIME N323 BC  
 FOX DEN 616 MISS 379

- P.E. 12.05.14 to 5.15.15 to PBRS Add It Up 3120A
- We love the depth of body, ease of condition and doing ability of this young purebred Angus female
- She is sired by the prominent sire EXAR Upshot 056B and from a daughter of MYTTY In Focus that goes back to a daughter of AA Right Time N323
- She sells bred to the powerful Lim-Flex sire and son of PBRS Milestone for a future Lim-Flex calf

**14 RITA 1T32 of Rita 6M28 7O65**

Angus Cow	Polled/Black	1T32	AAA +16965673	02.24.11										
EPD	CED 3	BW 2.3	WW 51	YW 91	MA 29	CEM 6	SC 0.26	ST -	DOC -	CW 21	RE 0.56	YG 0.01	MS 1.21	\$MTI -
%Rank	-	-	-	-	-	-	-	-	-	-	-	-	-	-

S S OBJECTIVE T510 0T26  
**RITO 7065 OF RITA 5M46 OBJ**  
 RITA 5M46 OF 2536 PRED

G A R PREDESTINED  
**RITA 6M28 OF RITA 4W25 PRED**  
 RITA 4W25 OF 2V6 2878

S S TRAVELER 6807 T510  
 S S MISS RITA R011 7R8  
 G A R PREDESTINED  
 G A R PRECISION 2536  
 B/R NEW DESIGN 036  
 G A R EXT 4206  
 RITO 2 878 OF 2536 BVND 878  
 RITA 2V6 OF 2536 1407

- P.E. 5.12.15 to 8.15.15 to MAGS Xyloid 3712X
- Talk about an elite purebred Angus female we have here to highlight this fall production sale
- She is a daughter of Rito 7065 of Rita 5M46 Obj, a son of SS Objective T510
- Her dam is a daughter of GAR Predestined back to a daughter of Rito 2 878 of 2536
- She has earned a 1.21 for marbling and .56 for ribeye. She also has earned a 91 for yearling weight and 29 for milking ability
- She sells mated to the 75% Lim-Flex sire and once All American Futurity champion bull MAGS Xyloid

# Lot 15 B A R N D 884-37

Angus Bull Polled/Black B114 AAA 17759857 11.01.13

	CED	BW	WW	YW	MA	CEM	SC	ST	DOC	CW	RE	YG	MS	SMTI
EPD	8	1.9	38	60	20	7	0.08	-	-	26	0.43	0.01	0.17	-
%Rank	-	-	-	-	-	-	-	-	-	-	-	-	-	-

BON VIEW NEW DESIGN 878 B/R NEW DESIGN 036  
**B A R 878-6** BON VIEW GAMMER 85  
 B A R N D GEORGETTE B/R NEW DESIGN 036  
 B A R GINETTE 105  
 B A R 878-1 BON VIEW NEW DESIGN 878  
**B A R 76 BLACK PRIDE** B A R 186 GUSSIE  
 B A R BOB'S SHONE EMUL B A R PRIDE 295  
 B A R BLACK BAND SHONE

- P.E. 12.01.14 to 5.05.15 to WLR Reload
- Here is a grand daughter of Bon View New Design 878 that has the maternal and high marbling look to her
- She is very feminine and clean up through her front end and has that brood cow look to her
- We appreciate all good things found within this female and just know she will be a big plus to whatever program decides to make this investment
- Her mating for a Lim-Flex calf sired by the once All American Futurity champion bull WLR Reload will be a very nice bonus to the them



Angus Bred Female

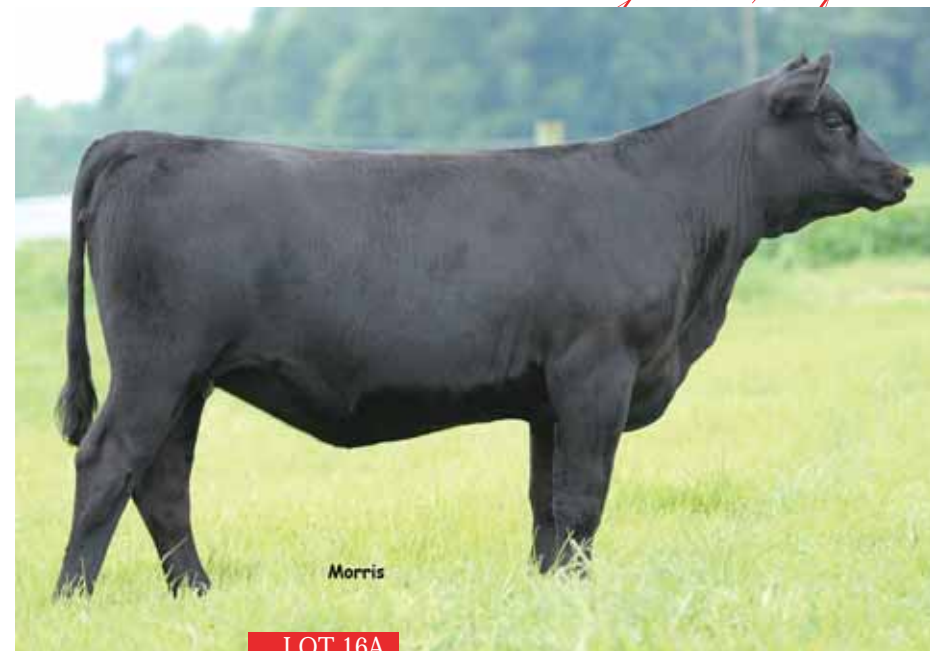
# Lot 16 PCF Eva 11 of In Focus

Angus Cow Polled/Black 111 AAA 17255398 09.20.11

	CED	BW	WW	YW	MA	CEM	SC	ST	DOC	CW	RE	YG	MS	SMTI
EPD	9	0.2	51	89	28	12	-	-	-	23	-0.07	0.035	0.68	-
%Rank	-	-	-	-	-	-	-	-	-	-	-	-	-	-

S A F FOCUS OF E R S A F FAME  
**MYTTY IN FOCUS** G D A R FOREVER LADY 246  
 MYTTY COUNTESS 906 SITZ ALLIANCE 6595  
 BALDRIDGE COUNTESS 357  
 WOODHILL ADVANCE WOODHILL ADMIRAL 77K  
**P C F EVA WOODHILL 410** WOODHILL ERICA 854-1167  
 THREE TREES EVA 2752 THREE TREES PRIME CUT 0145  
 THREE TREES EVA 0391

- P.E. 5.12.15 to 8.15.15 to MAGS Xyloid 3712X
- Here is a very productive and maternal daughter of MYTTY In Focus from a daughter of Woodhill Advance back to a daughter of Three Trees Prime Cut
- She has earned a 28 for milk and maintains a .68 for marbling
- We appreciate and admire this pair and think they are a featured lot in this prominent production sale
- The Edwards program is known for raising easy doing, big footed and very sound structured purebred Angus cattle and we are certain you will appreciate her on sale day with her calf at side
- **LOT 16A - ELC C111** - born 2.19.15, purebred Angus heifer sired by Rito 7065 of Rita 5M46 Obj.



Angus Cow/Calf Pair

LOT 16A



Morris

LOT 17

**17** **WLR** Cocoa Puff

Lim-Flex (50) Cow      HP/DB      BJLR 762X      LFF 1965727      4.03.10

	CE	BW	WW	YW	MA	CEM	SC	ST	DOC	CW	RE	YG	MS	SMTI
EPD	8	1.8	67	108	16	6	0.42	12	13	37	0.75	-0.2	0.37	65.55
%Rank	50	60	40	20	>95	45	70	85	75	20	10	30	15	15

B C MARATHON 7022  
**BC 7022 RAVEN 7965**  
 O C C BLACKBIRD 796F  
 JCL LODESTAR 27L  
**MAGS TABU**  
 MAGS PHANTOMS PRIZE

OCC KIRBY 633K  
 GIBBET HILL MIGNONNE E37  
 O C C BONANZA 880B  
 O C C BLACKBIRD 779A  
 HUNTS HI-LITER 245G  
 LOGAN'S CHEERLEADER 280G  
 GPF BLAQUE RULON  
 ALCM KOOL TUNES

- P.E. 12.01.14 to 5.05.15.to MAGS Xyloid 3712X
- Black and homozygous polled
- A true sale feature and one of the finest to ever sell at Edwards Land & Cattle Co.
- This daughter of BC 7022 Raven 7965 is as perfect as you would ever want to make one. She is flawless in her design, perfect in her conformation and is as gorgeous as you would ever want in a Lim-Flex female
- Her dam is MAGS Tabu, a daughter of JCL Lodestar 27L and from MAGS Phantoms Prize. This maternal sister to the breed's Triple Crown winning bull MAGS WLR Usual Suspect has really been a solid producing female for Wies and Magness. Of course the many time national gold medal sire MAGS Phantoms Prize the is the leading Wies and Magness donor that continues to make strides as maintaining her status as one of the all time great ones!
- This homozygous polled female can easily serve as a donor in any program at any level

**18** **RVDR Tammy 2716T**

Lim-Flex (50) Cow Polled/HB RVDR 2716T LFF 1881326 03.29.07

	CED	BW	WW	YW	MA	CEM	SC	ST	DOC	CW	RE	YG	MS	SMTI
EPD	8	3.2	61	92	31	6	0.65	18	9	29	0.11	0.05	0.35	60.64
%Rank	35	80	50	45	15	40	30	20	80	35	95	>95	15	15

B/R NEW DESIGN 036  
**BON VIEW NEW DESIGN 878**  
 BON VIEW GAMMER 85

DVFC BLACK POWER 342M  
**EXG PAULINE 428P RVDR**  
 BGRR MS KATIE

V D A R NEW TREND 315  
 B/R BLACKCAP EMPRESS 76  
 BON VIEW BANDO 598  
 BON VIEW GAMMER 233  
 MAGS JUMANJI  
 PERF BLACK TANK 874W  
 RLJB HARVEY'S HOLLYWOOD  
 TBWI MISS ASHLEY

- P.E. 12.01.14 to 5.05.15 to MAGS Xyloid 3712X
- RVDR Tammy possesses the same positive traits as many of the breed's Bon View 878 daughters have, she has super maternal value she is extremely sound and is certain easy fleshing. Many Angus breeders have come to rely on 878 as their go to Angus sire who passes on enough real word traits and yet is very marketable and highly recognizable.
- Upon evaluations of this female, you will recognize the maternal look through her front 1/3, her straight Top, level hip and wide stance.
- From a numeric perspective, she is in the top 15% for MK,MB and SMTI; impressive numbers on the eight year old female.



**19** **MAGS Ultraviolet Paint**

Lim-Flex (50) Cow HP/HB MAGS 880U LFF 1916518 01.24.08

	CED	BW	WW	YW	MA	CEM	SC	ST	DOC	CW	RE	YG	MS	SMTI
EPD	9	1.1	54	92	30	6	0.85	16	11	27	0.19	-0.03	0.97	81.89
%Rank	30	35	75	45	15	40	15	35	75	40	90	85	1	1

B/R NEW DESIGN 036  
**G A R PREDESTINED**  
 G A R EXT 4206

JCL BAXTER  
**MAGS PAINT JOB 506P**  
 MAGS 15M

V D A R NEW TREND 315  
 B/R BLACKCAP EMPRESS 76  
 N BAR EMULATION EXT  
 G A R 6807 TRAVELER 1432  
 COLE FIRST DOWN 46D  
 LKCC SMITH CATTLE 452B  
 MAGS JUMANJI  
 TS COUNTESS 8580

- P.E. 12.29.14 to 5.20.15 to WLR Game of Thrones
- If there ever was an instance that we wish we could make facts and figures jump off a page, it would be right here with MAGS Ultraviolet Paint! Her pedigree and scan data has beautifully worked together to generate a MB epd .97 and SMTI of 81.89. These figures earn her an exclusive spot amongst the breed's elite top 1% for these respective traits.
- GAR Predestined is one of the very finest crosses for Lim-Flex cattle available on the public market to inject incredible marbling traits. When converted for Limousin purposed, GAR Predestined posts a remarkable MB epd of 1.65 and SMTI of 108.80. In our opinion, he is one of the most functional Angus answers available for our Lim-Flex program.
- MAGS Ultraviolet Paint is a maternal sister to the Linhart herd sire, MAGS Teal Paint 650; Teal Paint was a leading young donor in a past Magness Sale.



G A R Predestined, sire of Lot 19.



LOT 20



AUTO Will Power 160X, service sire to Lot 21.

**20**

**PBR Ultra 816U**

Lim-Flex (25) Cow	HP/HB	PBR 816U	LFF 1909333	02.23.08										
CED	BW	WW	YW	MA	CEM	SC	ST	DOC	CW	RE	YG	MS	\$MTI	
EPD	11	0.5	57	87	24	8	0.35	11	10	22	0.3	-0.07	0.62	70.42
%Rank	15	25	65	55	55	20	70	85	80	60	80	4	4	

G A R INTEGRITY  
**DCC RITO 619 OF 6002 3J24**  
 DCC RITA 3J24 OF 1I2 221

TNUH BLUE PRINT 245H  
**MAGS SPECKLES**  
 PRECISION PET 3 OF RWR

BON VIEW NEW DESIGN 1407  
 G A R PRECISION 1019  
 RITO 1I2 OF 2536 RITO 616  
 DCC IDEAL 221 OF 692 8375  
 WADDLES COBALT 3106  
 TNUH MISS C245  
 GAR PRECISION 1680  
 AMBUSHES AMBER 2 OF RWR

- P.E. 12.29.14 to 5.20.15 to WLR Game of Thrones
- Being homozygous polled and homozygous black makes this already intriguing female, extremely captivating. Her pedigree allows her new owner to breed or flush her so many different ways. She is a genetic outcross to many of the popular genetics available to us as Limousin breeders.
- PBR Ultra 816U is a direct daughter of the ever so exciting Angus sire, DCC Rito 618 of 6002 3224.
- This female is absolutely stunning, beautifully designed and widely accepted.
- SMTI and MB are slowly transitioning from the "want list" to the "Need list", fortunately for you PBR Ultra is in the top 4% of the breed for marbling and SMTI.

**21**

**LH Whimsical 566W**

Lim-Flex (50) Cow	HP/DB	LCHA 566W	LFF 1970339	12.05.09										
CED	BW	WW	YW	MA	CEM	SC	ST	DOC	CW	RE	YG	MS	\$MTI	
EPD	11	-0.1	57	97	31	8	0.3	13	5	24	0.55	-0.06	0.52	66.7
%Rank	15	20	65	45	15	20	70	70	95	50	35	80	10	10

JCL LODSTAR 27L  
**KRVN TAHOE 018T**  
 WULFS GERALDINE 7057G

C A FUTURE DIRECTION 5321  
**SOUTHERN 838L ENTENSE 313**  
 BT EVERELDA ENTENSE 838L

HUNTS HI-LITER 245G  
 LOGAN'S CHEERLEADER 280G  
 EXLR BROADWAY 041E  
 WULFS EYELET 5266E  
 GAR PRECISION 1680  
 C A MISS POWER FIX 308  
 AAR NEW TREND  
 BT EVERELDA ENTENSE 57D

- P.E. 12.31.14 to 5.01.15 to AUTO Will Power 160X
- LCHA Whimsical 566W exemplifies what a Lim-Flex donor is supposed to do, she excels in terms of milk and marbling, while being a calving ease specialist. Homozygous polled and extremely desirable for her MB, MTI, CED and MK. Her performance reports indicate that she ranks in the top 10% of the breed for MB and SMTI, and in the top 15% for CED and MK.
- The dam of this beautiful yet powerful females is very outstanding in her own right. Bred in the Southern Cattle system, she is in the top 1% for CED, top 2% for MB, top 4% for BW and SMTI. She is a moderate framed, direct daughter of BT Everelda 838L.
- At five years of age, this Lance Hall bred female is in the prime of her life and ready to go into the donor pen.
- Whimsical's most recent calf recorded a 722 WW ad 1269YW an ultrasound IMF score of 3.9 on an 14.23 sq inch REA.



22

5 Embryos

56% Lim-Flex Double Polled

EPD	CED	BW	WW	YW	MA	CEM	SC	ST	DOC	CW	RE	YG	MS	SMTI
10	0.2	61	95	25	8	0.40	6	13	26	0.23	0.02	0.46	64.74	
%Rank	-	-	-	-	-	-	-	-	-	-	-	-	-	-

- EF XCESSIVE FORCE
- RLBH AIR FORCE ONE**
- EF YAFFA 821Y
- MAGS WINSTON
- SBLX ZANE**
- SBLX UNDERTHECOVERS 201U
- D A TRAVELER 004 703
- CFLX MOLLYS IMAGE
- EXLR NEW GENERATION 071M
- MAGS ROSE PETAL
- BT CROSSOVER 758N
- MAGS STRAWBERRY
- G A R PREDESTINED
- ELMW GINNIE P58G

- Double polled and could be one of the very best matings created at ELCX
- From the ELCX elite red Lim-Flex donor that has so much in her favor. She is a daughter of the deceased MAGS Winston and from the \$25,000 valued donor SBLX Underthecovers 201U. 201U is a GAR Predestined daughter from the famed MAGS Manuela 662M donor
- These future calves are sired by the \$32,000 national top selling bull RLBH Air Force One 821A that is now headlining the Council Family Limousin program in Madisonville, TX



Genetic Opportunities

RLBH Air Force One, sire of Lot 22.



SBLX Zane, dam of Lot 22.

23

6 Embryos

84% Limousin Double Polled Double Black

EPD	CED	BW	WW	YW	MA	CEM	SC	ST	DOC	CW	RE	YG	MS	SMTI
8	2.4	70	97	28	4	0.7	15	18	30	0.27	-0.10	0.09	54.82	
%Rank	-	-	-	-	-	-	-	-	-	-	-	-	-	-

- LH RODEMASTER 338R
- AUTO GUNN POINT 192Y**
- AVA JO DHVO 721R
- EXLR EXCELLANTE 251L
- MAGS SARAFINA**
- CARROUSELS MAVIS 2214M
- JCL LODESTAR 27L
- VERMILION E BLACKBIRD9546
- GPFF BLAQUE RULON
- AMY JO DHAN 20L
- EXLR POLLED RESOLVE 175G
- EXLR 199H
- EXLR DAKOTA 353G
- DESP MIDNIGHT SPECIAL

- These 84% Limousin genetics are sired by AUTO Gunn Point 192Y, the leading LH Rodemaster 338R son from a maternal sister to the once national champion sire DHVO Deuce 132R
- Their dam is the leading purebred donor MAGS Sarafina 1495S that is one of the breed's most prominent purebred donors
- These embryos are sure to bring forth some attention in the breed as it is hard to come by elite purebred genetics such as these



AUTO Gunn Point 192Y, sire of Lot 23.



MAGS Sarafina, dam of Lot 23.

24

4 Embryos

62.5% Lim-Flex Double Polled Double Black

EPD	CED	BW	WW	YW	MA	CEM	SC	ST	DOC	CW	RE	YG	MS	SMTI
6	2.6	72	106	22	7	0.6	18	9	36	0.66	-0.10	0.41	67.42	
%Rank	-	-	-	-	-	-	-	-	-	-	-	-	-	-

- LH RODEMASTER 338R
- WLR RELOAD**
- MAGS PHANTOMS PRIZE
- G A R PREDESTINED
- PBRs XCEPTIONAL 071X**
- WLR RENDEZVOUS 050R
- JCL LODESTAR 27L
- VERMILION E BLACKBIRD9546
- GPFF BLAQUE RULON
- ALCM KOOL TUNES
- B/R NEW DESIGN 036
- G A R EXT 4206
- GPFF BLAQUE RULON
- KEHG JULIET 10H

- Sired by the once All American Futurity grand champion bull WLR Reload and from the leading ELCX donor PBRs Xceptional 071X. She is a daughter of GAR Predestined from the WLR Rendezvous donor. Her MAGS Xyloid daughter owned by ELCX and Owen Cattle Company was a division champion at the '15 NAILE M.O.E. show and was named champion at several shows around the breed.
- This mating is one that is sure to bring attention to any program in the breed and we think is a highlight to this sale



WLR Reload, sire of Lot 24.



PBRs Xceptional 071X, dam of Lot 24.



Morris



LOT 25

PBRS Add It Up 3120A, service sire to Lot 25

**25** **ELCX Acadia 339A**

Lim-Flex (50) Cow    HP/DB    ELCX 339A    LFF 2052565    10.01.13

	CED	BW	WW	YW	MA	CEM	SC	ST	DOC	CW	RE	YG	MS	SMTI
EPD	7	2.2	71	112	28	7	1.07	-	7	39	0.71	-0.08	0.4	66.78
%Rank	60	65	25	15	25	30	10	-	95	15	15	70	15	10

TC ABERDEEN 759  
**EBFL YPSILANTI 420Y**  
 MAGS RAMADA  
 S A V NET WORTH 4200  
**MINE PLD NET WORTH 8043U**  
 MINE PLD BUTTERCREME

C R A BEXTOR 872 5205 608  
 TC BLACKBIRD 4034  
 TNUH BLUE PRINT 245H  
 MAGS MANDA  
 S A V 8180 TRAVELER 004  
 S A V MAY 2410  
 CARROUSELS NASDAQ  
 MINE COTTONBALL 0119K

- PE. 12.05.14 to 5.15.15 to PBRS Add It Up 3120A
- MINE PLD NET WORTH 8043U is one of the absolutely great ones to grace the pastures of Edward Land and Cattle and Twin Willows. You can't design a Lim-Flex female any more ideal than her. Her impact has been illustrated quite vividly for several years now and will continue to do so for many years to come.
- The excitement and anticipation of the EBFL Ypsilanti progeny was certainly justifiable, progeny like ELCX Acadia were well worth the wait.
- Homozygous polled and balanced epd profile, make Acadia a tremendous breeding piece.
- In terms of data, she is in the top 10% for SMTI, and top 15% for YW, MK, TM, CW, REA and MB. It is so exciting when we can get a female with such appealing REA and MB numbers.



WLR Euphoria, sister to Lot 26.



LOT 26



WLR Prada, sister to Lot 26.

**26** **WLR** Kate Spade

PB Limousin (87) Cow HP/Black BJLR 88A NPF 2050340 11.03.13

	CED	BW	WW	YW	MA	CEM	SC	ST	DOC	CW	RE	YG	MS	SMTI
EPD	7	2.7	63	92	19	5	0.25	14	0	28	0.36	-0.03	0.19	56.08
%Rank	60	80	60	60	95	65	90	60	>95	50	75	85	30	40

MAGS SASQUATCH  
**MAGSWL USUAL SUSPECT 538U**  
 MAGS PHANTOMS PRIZE

LESF ASPHALT 9N  
**AUTO REBECA 292S**  
 EXLR REBECA 1019P

EXLR NEW GENERATION 071M  
 MAGS FRUITFUL 487M  
 GPFF BLAQUE RULON  
 ALCM KOOL TUNES  
 GPFF BLAQUE RULON  
 GPFF EXTRA SWEET ELITE  
 BR MIDLAND  
 EXLR REBECA 614H

- P.E. 12.05.14 to 5.15.15 to PBRS Add It Up 3120A
- Black and homozygous polled
- This 87.5% Limousin heifer represents a proven and consistent winning pedigree. She just happens to be a full sibling to such WLR greats as: WLR Euphoria, 2013 NWSS Junior Show Grand Champion and 2012 American Royal Open Show grand champion for Tanner Walden, Tonganoxie, KS and WLR Prada, 2013 Fort Worth Grand Champion, 2011 NAILE Reserve Grand Champion and countless others for Shelby Skinner, Stillwater, OK
- This donor prospect is big time and one of the finest to represent the WLR prefix. We have no doubt she is going to be an amazing impactful foundation type female. We have a lot of admiration for this heifer and truly feel she will follow in the footsteps of her two sisters.

*Limousin & Lim-Flex Bred Females*



**27**

**ELCX 336A**

Lim-Flex (50) Cow	HP/HB	ELCX 336A	--	10.01.13										
EPD	CED	BW	WW	YW	MA	CEM	SC	ST	DOC	CW	RE	YG	MS	\$MTI
8	0.6	64	99	30	10	1.00	4	5	29	0.77	-0.12	0.40	64.60	
%Rank	-	-	-	-	-	-	-	-	-	-	-	-	-	-

TC ABERDEEN 759  
**EBFL YPSILANTI 420Y**  
 MAGS RAMADA  
 BASIN FRANCHISE P142  
**PBRS PINA MARIE 811U**  
 CARROUSELS PINA COLADA

C R A BEXTOR 872 5205 608  
 TC BLACKBIRD 4034  
 TNUH BLUE PRINT 245H  
 MAGS MANDA  
 C A FUTURE DIRECTION 5321  
 BASIN CHLOE 812L  
 AUTO BLACK DAKOTA 129J  
 ELMW GINNIE P58G

- P.E. 12.05.14 to 5.15.15 to PBRS Add It Up 3120A
- Homozygous polled and homozygous black
- This is one beautiful female from the heart of the Edwards program
- She is sired by the big numbered and prominent breed leading sire EBFL Ypsilanti 420Y
- Her dam is PBRS Pina Marie 811U is a daughter of Basin Franchise from the once national champion female Carrousel's Pina Colada
- This young heifer is made nearly perfect and represents a pedigree that is very predictable and prominent

*Two Fire N' Ice daughters*



PBRS Add It Up 3120A, service sire to Lot 27.

**28**

**ELCX Amy 941A**

Lim-Flex (37) Cow	HP/DB	ELCX 941A	LFF 2046498	03.20.13										
EPD	CED	BW	WW	YW	MA	CEM	SC	ST	DOC	CW	RE	YG	MS	\$MTI
9	0.6	68	110	29	8	0.65	12	17	36	0.55	-0.03	0.7	76.31	
%Rank	35	30	35	20	20	15	45	85	60	20	40	85	2	2

BOHI TITLIST 7050T  
**TW FIRE N' ICE**  
 MAGS UPPER SAUNTER  
 G A R PREDESTINED  
**SF YOUNG LUCY 941**  
 RIVERBEND YOUNG LUCY R551

AUTO DOLLAR GENERAL 122R  
 CARROUSELS PINA COLADA  
 LH RODEMASTER 338R  
 MAGS SAUNTER  
 B/R NEW DESIGN 036  
 G A R EXT 4206  
 B/R DESTINATION 727-928  
 B/R YOUNG LUCY 2118

- P.E. 5.12.15 to 8.15.15 to MAGS Xyloid 3712X
- ECLX Amy 941A is a direct daughter of one the most stunning bull calves to be exhibited in recent history, TW Fire N' Ice. His straightness of lines, flawless phenotype substance of bone and muscle, make him a rare treat.
- The GAR Predestined daughters and granddaughters are so maternal, and so very functional and loaded with carcass strength, they have been a real breath of fresh air to incorporate into our Lim-Flex scenario.
- When compared to breed average ELCX Amy offers an additional 110 lbs of YW while maintaining a .70 MB epd. Furthermore, she is in the top 2% of the breed for SMTI.
- Homozygous polled

## 29 ELCX An One 816 A

Lim-Flex (50) Cow HP/DB ELCX 816A LFF 2077354 10.11.13

	CED	BW	WW	YW	MA	CEM	SC	ST	DOC	CW	RE	YG	MS	SMTI
EPD	10	1.5	66	101	27	9	0.47	12	18	31	0.41	-0.06	0.39	64.64
%Rank	30	50	45	40	35	10	70	85	55	40	65	75	15	15

BOHI TITELIST 7050T  
**TW FIRE N' ICE**  
 MAGS UPPER SAUNTER

DCC RITO 619 OF 6002 3J24  
**PBRS ULTRA 816U**  
 MAGS SPECKLES

AUTO DOLLAR GENERAL 122R  
 CARROUSELS PINA COLADA  
 LH RODEMASTER 338R  
 MAGS SAUNTER  
 G A R INTEGRITY  
 DCC RITA 3J24 OF 1I2 221  
 TNUH BLUE PRINT 245H  
 PRECISION PET 3 OF RWR

- P.E. 12.05.14 to 5.15.15 to PBRS Add It Up 3120A
- A natural calf out of PBRS Ultra 816U, our 25% Lim-Flex donor that is featured in this very offering. On sale day you will see why it is hard to part with these two gorgeous ladies.
- This fine Fire N' Ice daughter is above average for all maternal and growth EPD's and is in the top 15 % of the breed for MB and SMTI.
- We appreciate ELCX An One 816A's performance to date here at the Edwards Land & Cattle and are so very confident that she is continue with her greatness as she enters production.



## 30 ELCX Atlas 002 A

Lim-Flex (37) Cow HP/DB ELXC 002A LFF 2077408 10.28.13

	CED	BW	WW	YW	MA	CEM	SC	ST	DOC	CW	RE	YG	MS	SMTI
EPD	-	-	-	-	-	-	-	-	-	-	-	-	-	-
%Rank	-	-	-	-	-	-	-	-	-	-	-	-	-	-

BOHI TITELIST 7050T  
**TW FIRE N' ICE**  
 MAGS UPPER SAUNTER

S S OBJECTIVE T510 0T26  
**RITA OOF2 OF RITA 786 OBJ**  
 RITA 786 OF RITA 4R23 878

AUTO DOLLAR GENERAL 122R  
 CARROUSELS PINA COLADA  
 LH RODEMASTER 338R  
 MAGS SAUNTER  
 SS TRAVELER 6807 T510  
 S S MISS RITA R011 7R8

- P.E. 12.05.14 to 5.15.15 to PBRS Add It Up 3120A
- Homozygous polled
- This SS Objective T510 0T26 granddaughter will be a magnificent addition to your herd, especially if you are looking to improve your birth-weight situation. Several generations of calving ease is present in this prestigious lineage.
- Study this female from the ground up, she is made with longevity and productivity in mind.
- 37% Lim-Flex females will certainly add an interesting dynamic to your program with a dose of additional Angus maternal traits in addition substantial marbling.
- Take our word for it, these Fire N' Ice daughters are going to make their mark on the Limousin breed.



*mags Xyloid Daughter*



Morris

MAGS Xyloid, sire of Lot 31.



MAGS Satchel, dam of Lot 31.



**31** ELCX Annabelle 347A

Lim-Flex (62) Cow		HP/HB			ELCX 347A			LFF 2046921			11.10.13			
EPD	CED	BW	WW	YW	MA	CEM	SC	ST	DOC	CW	RE	YG	MS	\$MTI
9	1.8	61	92	19	8	0.7	12	14	27	0.23	-0.01	0.34	60.92	
%Rank	35	60	70	60	95	15	35	85	70	55	95	90	15	25

DHVO DEUCE 132R  
**MAGS XYLOID**  
 BOHI RHONDA 314R  
 BR MIDLAND  
**MAGS SATCHEL**  
 MAGS LADY ACE

GPF BLAQUE RULON  
 AMY JO DHAN 20L  
 EXLR NEW GENERATION 071M  
 DAVIS ROSETTA 9514  
 TWIN VALLEY PRECISIONE161  
 BR ROYAL LASS 7036-19  
 EXLR INTRIGUE 361G  
 CHAZ MISS GRETA 7003G

- P.E. 12.05.14 to 5.15.15 to PBRS Add It Up 3120A
- If you are in search for a power female that is absolutely solid from the ground up, this particular MAGS Xyloid daughter is the answer.
- Huge footed, big boned, deep middled and tons of muscle.
- Study this female from any angle and her dimension will amaze you.
- ELCX Annabelle 347A goes back to the great MAGS Lady Ace, the dam of MAGS Snickers, MAGS Sandbox and MAGS Roaring Twenties and many other top donors across the country in the leading herds from coast to coast.

*mags Winston Daughters*



Morris

MAGS Winston, sire of Lots 32 - 35.



PBRS Add It Up 3120A,  
 service sire to Lot 32.



**32** ELCX Elba 512A

Lim-Flex (25) Cow		HP/DB			ELCX 512A			LFF 2038332			10.03.13			
EPD	CED	BW	WW	YW	MA	CEM	SC	ST	DOC	CW	RE	YG	MS	\$MTI
14	-0.8	60	99	24	8	0.09	-	-	28	0.38	-0.01	0.76	76	
%Rank	5	15	75	45	60	15	>95	-	50	70	90	1	2	

BT CROSSOVER 758N  
**MAGS WINSTON**  
 MAGS STRAWBERRY  
 G A R PREDESTINED T598  
**PCF ELBA RP OF 512**  
 PCF APACHE ELBA 512

C A FUTURE DIRECTION 5321  
 BT ROYAL PRIDE 237G  
 EXLR NEW GENERATION 071M  
 MAGS FRUITFUL 487M  
 G A R PREDESTINED  
 G A R FUTURE DIRECTION 18  
 ROSEWOOD APACHE 1084  
 THREE TREES ELBA 2785

- P.E. 12.05.14 to 5.15.15 to PBRS Add It Up 3120A
- MAGS Winston has produced some of the very finest show cattle to ever walk in the ring, this same phenotypic excellence is so greatly appreciated in our replacement stock as well. It is always a treat to stroll through pastures and be surrounded by exceptionally attractive females.
- ELCX Elba 512A is homozygous polled and 25% Lim-Flex.
- When researching her strengths, calving ease certainly surfaces to the top quickly, her CED epd is an impressive 14 and she is negative for BW epd.
- We admire her 64 lb actual birthweight and are confident that this GAR Predestined granddaughter will pass on this same attribute.

### 33 ELCX Fannie 110A

Lim-Flex (25) Cow HP/DB ELCX 110A LFF 2038333 09.27.13

	CED	BW	WW	YW	MA	CEM	SC	ST	DOC	CW	RE	YG	MS	\$MTI
EPD	16	-1.6	64	107	25	11	0.41	9	20	31	0.28	0.02	0.78	77.76
%Rank	1	5	55	25	50	1	70	>95	45	40	90	95	1	1

BT CROSSOVER 758N  
**MAGS WINSTON**  
 MAGS STRAWBERRY

MYTTY IN FOCUS  
**PCF FANNIE 110 OF IN FOCUS**  
 PCF EXPECTATION HEADTIME

C A FUTURE DIRECTION 5321  
 BT ROYAL PRIDE 237G  
 EXLR NEW GENERATION 071M  
 MAGS FRUITFUL 487M  
 S A F FOCUS OF E R  
 MYTTY COUNTESS 906  
 G A R EXPECTATION 4915  
 P C F FANNIE LEADTIME 220

- P.E. 12.05.14 to 5.15.15 to PBRS Add It Up 3120A
- ELCX Fannie is at the very top of our herd sort for CED and amongst the breed's elite, ranking in the top 1% of the breed for CED and CEM and top 5% for BW epd.
- Homozygous polled grand daughter of Mytty In Focus, the Angus calving ease icon for many years.
- Looking back a generation at the EPD profile of her dam, PCF Fannie 110 of In Focus, you will be amazed by the growth spread and carcass traits.
- 110A is a paternal sister to one of the most exciting bulls to come on the market recently, MAGS Zodiac.



### 34 ELCX Attention 123A

Lim-Flex (62) Cow DP/DB ELCX 123A LFF 2077407 10.27.13

	CED	BW	WW	YW	MA	CEM	SC	ST	DOC	CW	RE	YG	MS	\$MTI
EPD	11	0.7	68	106	28	10	0.13	9	16	33	0.39	-0.01	0.49	68.59
%Rank	20	35	35	25	25	3	95	>95	65	30	70	90	10	10

BT CROSSOVER 758N  
**MAGS WINSTON**  
 MAGS STRAWBERRY

LH RODEMASTER 338R  
**LH YAKIMA LADY 123Y**  
 LH WILMA 538W

C A FUTURE DIRECTION 5321  
 BT ROYAL PRIDE 237G  
 EXLR NEW GENERATION 071M  
 MAGS FRUITFUL 487M  
 JCL LODESTAR 27L  
 VERMILION E BLACKBIRD9546  
 MCBN TARGET 705T  
 MISS WULFETTE 1013L

- P.E. 12.05.14 to 5.15.15 to PBRS Add It Up 3120A
- This exceptional females out of one of our favorite Lance Hall bred cows, was a hard one to part with. The combination of MAGS Winstons "look" and style with the LH Yakima Lady, really generated a female that is big time.
- ELCX Attention 123A has an intriguing set of numbers from CED all the way through YW, she is in the top 35% for all calving ease and growth traits.
- MB EPD and SMTI EPD are so very popular and necessary right now and this donor prospect is in the top 10% of the breed for both.



### 35 ELCX Joyce 133A

Lim-Flex (62) Cow HP/DB ELCX 133A LFF 2081755 09.22.13

	CED	BW	WW	YW	MA	CEM	SC	ST	DOC	CW	RE	YG	MS	\$MTI
EPD	11	0.8	70	108	24	8	0.14	12	14	34	0.43	-0.01	0.48	68.73
%Rank	20	35	30	20	60	15	95	85	70	25	60	90	10	10

BT CROSSOVER 758N  
**MAGS WINSTON**  
 MAGS STRAWBERRY

LH RODEMASTER 338R  
**LH YESTERDAY'S DREAM 133Y**  
 KRWN TICKLES 048T

C A FUTURE DIRECTION 5321  
 BT ROYAL PRIDE 237G  
 EXLR NEW GENERATION 071M  
 MAGS FRUITFUL 487M  
 JCL LODESTAR 27L  
 VERMILION E BLACKBIRD9546  
 GPFF BLAQUE RULON  
 MAGS LAKE ERIE

- P.E. 12.05.14 to 5.15.15 to PBRS Add It Up 3120A
- Homozygous polled and double black
- This 62% Lim-Flex daughter of MAGS Winston ranks in the top 10% of the breed for marbling with a .48 and \$MTI with a 68.73
- She is very maternal in her appearance and has that brood cow look to her
- We admire her dam which is a homozygous polled and homozygous black daughter of LH Rodemaster 338R
- This heifer is made well and sells bred to the double polled, homozygous black son of PBRS Milestone from a daughter of the once national champion Sprng Crks Urlacher 311U bull from the national champion female Carrousel's Pina Colada



## Bohi Top Dollar 7144 Daughters



LOT 36



BOHI Top Dollar 7144T, sire of Lots 36 - 40.

- P.E. 12.05.14 to 5.15.15 to PBRS Add It Up 3120A
- This set of BOHI Top Dollar 7144T daughters have replacement females written all over them, his reputation for maternal traits is extremely accurate and consistent. His 74 TM epd is certainly a figure that is going to determine the economic success of many breeders.
- ELCX Rebekah 135A traces back to the coveted LVLS Rebecca cow family that is synonymous with success.
- This particular female is sure to pass on growth and marbling, making her an ideal herd sire maker.
- She ranks in the top 5% of the breed for MB epd and top 10% for CW and SMTI.

## 36 ELCX Rebekah 135A

Lim-Flex (60) Cow	DP/DB	ELCX 135A	LFF 2042960	10.06.13									
CED	BW	WW	YW	MA	CEM	SC	ST	DOC	CW	RE	YG	MS	SMTI
EPD 6	3	69	110	26	8	0.82	9	11	40	0.35	0.04	0.52	69.6
%Rank 70	85	30	20	40	15	25	>95	85	10	80	95	5	10

AUTO DOLLAR GENERAL 122R  
**BOHI TOP DOLLAR 7144T**  
 CARROUSELS PINA COLADA

EXAR PRIME PREMIUM 6444  
**EXLR REBECA 135W**  
 EXLR REBECA 1014S

LVLS SECRET WEAPON 4408K  
 AUTO KYRIA 232K  
 AUTO BLACK DAKOTA 129J  
 ELMW GINNIE P58G  
 GARDENS PRIME STAR  
 EXAR MISS TRAVELER 224  
 BR MIDLAND  
 LVLS REBECA

## 37 ELCX RebMoney 33 A

PB Limousin (100) Cow	DP/Black	ELCX 33A	NPF 2068784	12.01.13									
CED	BW	WW	YW	MA	CEM	SC	ST	DOC	CW	RE	YG	MS	SMTI
EPD 3	4.8	70	99	30	7	0.4	12	18	35	0.38	-0.04	0.03	52.42
%Rank 95	>95	30	45	15	30	70	85	55	25	70	80	55	55

AUTO DOLLAR GENERAL 122R  
**BOHI TOP DOLLAR 7144T**  
 CARROUSELS PINA COLADA

BTAP DVFC MONEYLINE 404AP  
**DPBN RED MONEY 33T**  
 GPFF 27E

LVLS SECRET WEAPON 4408K  
 AUTO KYRIA 232K  
 AUTO BLACK DAKOTA 129J  
 ELMW GINNIE P58G  
 GPFF BLAQUE RULON  
 FWLY HIDDEN RUMORS  
 ARER 18A POLLED ADAM  
 CHBL CANDY CANE

## 38 ELCX Act Fast 079A

PB Limousin (100) Cow	DP/HB	ELCX 079A	NPF 177353	10.27.13									
CED	BW	WW	YW	MA	CEM	SC	ST	DOC	CW	RE	YG	MS	SMTI
EPD 3	4.2	71	103	31	8	0.6	13	20	36	0.16	0.06	0.12	55.16
%Rank 95	>95	25	35	10	15	45	75	45	20	>95	>95	40	40

AUTO DOLLAR GENERAL 122R  
**BOHI TOP DOLLAR 7144T**  
 CARROUSELS PINA COLADA

AUTO BLACK DAKOTA 129J  
**MAGS NEPTUNE**  
 MAGS JEWEL

LVLS SECRET WEAPON 4408K  
 AUTO KYRIA 232K  
 AUTO BLACK DAKOTA 129J  
 ELMW GINNIE P58G  
 EXLR DAKOTA 353G  
 DFLC JET SET BPC 34Y  
 CHAZ FIRST CHOICE 6004F  
 MAGS DANCING FOR MONEY

- P.E. 12.05.14 to 5.15.15 to PBRS Add It Up 3120A
- ELCX Act Fast 079A comes from the same cow family that produced MAGS Manda. Manda has produced over 100 great ones in the Limousin breed including MAGS Wassail, MAGS Savage and MAGS Ramada. In our opinion the value in this lineage is so very notable.
- This particular pedigree is stacked with proven maternal production and will surface to the top of many herds for their milking potential and reproductive efficiency.
- We love the length and lean growth evident in ELCX Act Fast 079A.

## 39 ELCX Ava 6 A

PB Limousin (100) Cow	DP/DB	DPBN 6A	NPF 2068432	11.30.13									
CED	BW	WW	YW	MA	CEM	SC	ST	DOC	CW	RE	YG	MS	SMTI
EPD 4	4.2	70	96	31	6	0.55	15	17	32	0.41	-0.06	0.01	51.81
%Rank 90	>95	30	50	10	45	60	50	60	35	65	75	55	55

AUTO DOLLAR GENERAL 122R  
**BOHI TOP DOLLAR 7144T**  
 CARROUSELS PINA COLADA

GPFF BLAQUE RULON  
**DFLC BPC 6R**  
 GPFF BLACK POLLED KAYE

LVLS SECRET WEAPON 4408K  
 AUTO KYRIA 232K  
 AUTO BLACK DAKOTA 129J  
 ELMW GINNIE P58G  
 BLACK DIAMOND  
 QUAIL RUN RAMONA BP  
 SOGF SPECIAL K 247B  
 GPFF SIREN

- P.E. 12.05.14 to 5.15.15 to PBRS Add It Up 3120A
- There are several very special cattle in this breed that claim both Carrouseles Pina Colada and GPFF Blaque Rulon as their grand sire and grand dam on opposites side of their pedigree. With these two phenomenal individuals present, this female is destined for greatness.
- The purebred daughter of BOHI Top Dollar are perfectly suited as base cows in a Lim-Flex program or as breeding pieces in a purebred herd.
- Her 31 MK EPD needs to be appreciated and utilized to produce the next great one.

## 40 ELCX Amie 886 A

PB Limousin (100) Cow	DP/DB	ELCX 886A	NPF 2068475	09.22.13									
CED	BW	WW	YW	MA	CEM	SC	ST	DOC	CW	RE	YG	MS	SMTI
EPD 5	3.9	76	111	32	8	0.69	11	19	41	0.3	0.01	0.06	55.11
%Rank 80	95	10	15	10	15	45	90	50	10	85	90	50	40

AUTO DOLLAR GENERAL 122R  
**BOHI TOP DOLLAR 7144T**  
 CARROUSELS PINA COLADA

LVLS SECRET WEAPON 4408K  
**MCBN URSULA 886U**  
 TYEJ THERESA

LVLS SECRET WEAPON 4408K  
 AUTO KYRIA 232K  
 AUTO BLACK DAKOTA 129J  
 ELMW GINNIE P58G  
 LVLS FARMER 4G  
 LVLS 408H  
 KRVN NASKAR 013N  
 MAGS NEMOPHILA

- P.E. 12.05.14 to 5.15.15 to PBRS Add It Up 3120A
- All of the BOHI Top Dollar daughters that we decided to offer in this sale excel in terms of MK and TM, however ELCX Amie 886A also provides you with 76lbs for WW and a 111lb YW advantage as well.
- It takes a pretty special female to make the top 3% of the purebred population for TM, the same type of special female that can serve as the foundation female.
- LVLS Secret Weapon has been the choice of breeders concerned with growth and milk for over a decade now, this LVLS Secret Weapon granddaughter will certainly carry on the strength of performance.





LOT 41

**41** SPRING CRKS Answer Man 1021

Angus Bull Polled/Black 1021 AAA 17868154 02.20.14

	CED	BW	WW	YW	MA	CEM	SC	ST	DOC	CW	RE	YG	MS	SMTI
EPD	8	1.1	48	83	32	11	1.08	-	9	17	0.31	0.02	0.36	-
%Rank	5	5	5	5	5	5	5	-	5	5	5	5	5	-

- S A V FINAL ANSWER 0035
- SP THE ANSWER 813**
- S A ELINE DESIGN 648
- EXG NEW FRONTIER 41175
- EXAR MELANIE 83317**
- HUTCHINGS MELANIE 4083
- SITZ TRAVELER 8180
- S A V EMULOUS 8145
- SIK DESIGN 7259
- S A R 095 ELINE 1269
- B/R NEW FRONTIER 095
- LADY DATELINE OF M A R 191
- BR MIDLAND
- NELSON LADY SH 3316

- Owned with Spring Creeks Cattle Co., Wauzeka, Wisconsin
- What a beautiful made and well structured purebred Angus herd sire prospect that we along with our partners Spring Creeks Cattle Co. have decided to feature in this sale
- He is sired by a son of SAV Final Answer 0035 and from a daughter of EXG New Frontier 41175 and from a daughter of BR Midland
- He has posted a 32 for milk and a low birth of 1.1
- This herd sire prospect has a gentle disposition and very desirable conformation
- Buy with the utmost confidence in the elite purebred Angus herd sire prospect

## High Marbling & Big Numbered Bred Heifers



### 42 ELCX Always 221A

Lim-Flex (50) Cow	DP/DB	ELCX 221A	LFF 2077355	11.16.13
EPD	CED 9 BW 1.8 WW 61 YW 95 MA 26 CEM 6 SC 0.3 ST 12 DOC 10 CW 28 RE 0.51 YG -0.09 MS 0.61 SMTI 71.47			
%Rank	35 60 70 55 40 45 80 85 85 50 45 65 3 4			

G A R PREDESTINED  
**AUTO WILL POWER 160X**  
 AUTO REBECA 292S

MAGS WINSTON  
**ELCX DARK NIGHT 221Y**  
 DVFC DARK ANGEL 307K

B/R NEW DESIGN 036  
 G A R EXT 4206  
 LESF ASPHALT 9N  
 EXLR REBECA 1019P  
 BT CROSSOVER 758N  
 MAGS STRAWBERRY  
 WULFS HANDYMAN 4253H  
 SLVL ANGEL COOKIE 140D

- P.E. 12.05.14 to 5.15.15 to PBRS Add It Up 3120A
- Talk about generations upon generations of spectacular genetics! This particular pedigree powerhouse shows the very best sires and dams of both the Angus and Limousin gene pool. Such greats as GAR Predestined, EXLR Rebeca 1019P, MAGS Winston, DVFC Dark Angel 307K and MAGS Winston, just to name a few. Just a young November coming two-year old, this female is really starting to come into her own.
- Her 0.61 MB EPD certainly enhances the appeal to this particular female from our perspective. Marbling is the what the industry demands and we have tried our very hardest to produce cattle that excel such as ELCX always 221A.

### 43 ELCX Anniversary 020 A

Lim-Flex (50) Cow	DP/Black	ELCX 020A	LFF 2079138	10.16.13
EPD	CED 8 BW 1.7 WW 63 YW 96 MA 25 CEM 7 SC 0.54 ST - DOC 17 CW 29 RE 0.29 YG -0.02 MS 0.44 SMTI 65.31			
%Rank	50 55 60 50 50 30 60 - 60 45 85 85 10 15			

BON VIEW NEW DESIGN 1407  
**LVLS 3202U**  
 LVLS 9202S

TPIE RED CANON LC 9347  
**MINE CANYON'S CASH 1020Y**  
 ARWL PLD CASHBANKA 131T

B/R NEW DESIGN 036  
 BON VIEW PRIDE 664  
 LVLS FARMER JOHN 7428P  
 LVLS 9202N  
 LUCHT GRAND CANYON 541  
 TPIE GOLD RIB 2091  
 WULF'S NOBEL PRIZE 3861N  
 MINE PLD DOLLEY 3205N

- P.E. 12.05.14 to 5.15.15 to PBRS Add It Up 3120A
- ELCX Anniversary 020A is a direct daughter of the Massey Limousin herd sire LVLS 3202U, the Bon View New Design 1407 son that has one of the most balanced set of EPD's in the breed.
- The vast range between her 1.7 BW and 96 YW EPD's makes this 50% Lim-Flex female so very appealing.
- Analyze this donor prospect in picture or in person and she is incredible. Her hip structure and mass, her structural integrity and the amount of volume she has can't be missed either. This one was hard to get Nicholas to part with.



**44** **GPFX** **Blaque Erica**

Lim-Flex (50) Cow      HP/HB      GPFX 579U      LFF 1939721      10.18.08

EPD	CED	BW	WW	YW	MA	CEM	SC	ST	DOC	CW	RE	YG	MS	SMTI
8	1.3	52	88	26	4	0.1	-	7	24	0.3	-0.09	0.08	49.69	
%Rank	35	40	85	50	40	70	85	-	90	50	80	75	30	45

EF MAIN STAY 541M      AUTO BLACK DAKOTA 129J  
**EF SMACK DOWN 764S**      EXLR 231J  
 M L PRUDENCE 427      V A R GATEWAY 4101  
    M L PRUDENCE 9014  
**VVLC BLACK ERICA 408R**      EXLR DAKOTA 353G  
 WHITESTONE ERICA G125      DFCL JET SET BPC 34Y  
    PARAMONT AMBUSH 217Z  
    WHITESTONE 5204 ERICA C26

- P.E. 5.08.15 to 8.10.15 to AUTO Will Power 160X
- Homozygous polled and homozygous black
- A prominent and proven donor that proudly represents the ELCX program
- She is a daughter of the once national champion Lim-Flex sire EF Smack Down and from a daughter of the two time national gold medal sire AUTO Black Dakota 129J
- She is a big footed, sound made and very structurally correct female that continues to amaze us with her producing ability
- She has at her side a daughter of the once All American Futurity Champion bull MAGS Xyloid

**44a** **ELCX** **Cheyenne 579C**

Lim-Flex (62) Cow      DP/HB      ELCX 579C      LFF 2081838      04.14.15

EPD	CED	BW	WW	YW	MA	CEM	SC	ST	DOC	CW	RE	YG	MS	SMTI
8	2.6	57	88	22	7	0.35	-	19	25	0.12	-0.04	0.17	53.79	
%Rank	50	75	85	70	80	30	80	-	50	65	>95	80	35	45

**MAGS XYLOID**      DHVO DEUCE 132R  
                                  BOHI RHONDA 314R  
**GPFX BLAQUE ERICA**      EF SMACK DOWN 764S  
                                  VVLC BLACK ERICA 408R

LOT 44



2111011

LOT 45

**45** **MAGS** Tapestry

Lim-Flex (50) Cow DP/HB MAGS 2507T LFF 1877574 02.04.07

	CED	BW	WW	YW	MA	CEM	SC	ST	DOC	CW	RE	YG	MS	SMTI
EPD	11	1.6	65	97	24	8	1.4	20	25	30	0.12	0.07	0.68	73.68
%Rank	15	45	35	35	55	20	1	15	20	30	95	>95	3	3

S A F FOCUS OF E R  
**MYTTY IN FOCUS**  
 MYTTY COUNTESS 906

EXLR DAKOTA 353G  
**MAGS GRETCHEN 143L**  
 MAGS GRETCHEN

S A F FAME  
 G D A R FOREVER LADY 246  
 SITZ ALLIANCE 6595  
 BALDRIDGE COUNTESS 357  
 WULF'S COUNT DOWN 9251C  
 CANE RIDGE DAPHNE 011D  
 COLE FIRST DOWN 46D  
 MAGS BENJI

**45a** **ELCX** Costco 507 C

Lim-Flex (43) Bull DP/HB ELCX 507C LFM 2081837 04.20.15

	CED	BW	WW	YW	MA	CEM	SC	ST	DOC	CW	RE	YG	MS	SMTI
EPD	9	2.2	65	100	24	7	1.1	18	15	31	0.26	0.05	0.84	79.78
%Rank	35	65	50	40	60	30	4	20	65	40	90	95	1	1

**AUTO WILL POWER 160X**  
**MAGS TAPESTRY**

G A R PREDESTINED  
 AUTO REBECA 292S  
 MYTTY IN FOCUS  
 MAGS GRETCHEN 143L

- P.E. 5.08.15 to 8.10.15 to AUTO Will Power 160X
- Very rarely do females of this caliber enter the sale ring for your critique, MAGS Tapestry is a truly a female that could have as much impact on this breed as any female that has come before her.
- This former Lot 1 female from Brown Land and Cattle, has an exceptional flush record, is homozygous black and is a direct daughter of one of the most dominant sires in recent Angus history, MYTTY In Focus.
- From an analytical perspective, MAGS Tapestry ranks in the top 3% of the Lim-Flex population for marbling and SMTI, both traits can have a significant impact on the financial success of operations ranging from the seedstock segment to the packing industry.
- Maternal sister to past Denver reserve champion and Massey/Cole Kaufman donor, MAGS Wallpaper out of the famous MAGS Gretchen donor.
- This tremendous female is in the top 1% of the breed for SC, top 15% for stayability and top 20% for docility.
- You won't find one designed any better than MAGS Tapestry, she is passing this highly desirable conformation on to her progeny, such as the daughters that were so very successfully shown by the Kendall family at the 2015 VCCP Show in Virginia.
- LOT 45A - BW: 80 lbs.

**45b**

**6 Embryos**

75% Lim-Flex Double Polled Homozygous Black

	CED	BW	WW	YW	MA	CEM	SC	ST	DOC	CW	RE	YG	MS	SMTI
EPD	12	0.9	72	114	24	8	1.1	23	23	39	0.17	0.08	0.19	68.91
%Rank	-	-	-	-	-	-	-	-	-	-	-	-	-	-

HUNTS HI-LITER 245G  
**JCL LODESTAR 27L**  
 LOGAN'S CHEERLEADER 280G

WADDLES COBALT 3106  
 TNUH MISS C245  
 COLE FIRST DOWN 46D  
 TTCC CONFIDENCE MAKER  
 EXLR NEW GENERATION 071M  
 MAGS FRUITFUL 487M  
 GPFF BLAQUE RULON  
 ALCM KOOL TUNES

MAGS SASQUATCH  
**MAGS TAPESTRY**  
 MAGS PHANTOMS PRIZE

- These 75% Lim-Flex are double polled and homozygous black and stem from a very progressive mating from the heart of the ELCX program
- They are sired by the multiple trait leading sire JCL Lodestar 27L and from the prominent donor MAGS Tapestry which is a highlight of this sale. She is a daughter MYTTY In Focus that has been a solid and very consistent producer donor



JCL Lodestar 27L,  
sire of Lot 45B embryos.

**45c**

**6 Embryos**

75% Lim-Flex Double Polled Black

	CED	BW	WW	YW	MA	CEM	SC	ST	DOC	CW	RE	YG	MS	SMTI
EPD	8	2.9	60	88	23	8	0.8	16	14	27	0.32	0.01	0.36	61.14
%Rank	-	-	-	-	-	-	-	-	-	-	-	-	-	-

HUNTS HI-LITER 245G  
**MAGS USUAL SUSPECT 538U**  
 LOGAN'S CHEERLEADER 280G

WADDLES COBALT 3106  
 TNUH MISS C245  
 COLE FIRST DOWN 46D  
 TTCC CONFIDENCE MAKER  
 EXLR NEW GENERATION 071M  
 MAGS FRUITFUL 487M  
 GPFF BLAQUE RULON  
 ALCM KOOL TUNES

MAGS SASQUATCH  
**MAGS TAPESTRY**  
 MAGS PHANTOMS PRIZE

- These future calves are sired by the once Triple Crown winning bull MAGS WLR Usual Suspect, a red purebred bull that continues to produce excellence around the breed
- We think the mating of MAGS WLR Usual Suspect with MAGS Tapestry is a strong mating and one that will create offspring that will have extra bone, foot size, added muscle and for sure a prominent and desirable show look to them



MAGS WL  
Usual Suspect



MAGS Tapestry, dam of Lot 46.



MAGS Xyloid, sire of Lot 46.



LOT 47

- P.E. 5.12.15 to 8.15.15 to MAGS Xyloid 3712X
- ELCX Angel is an own daughter of the famed MAGS Tapestry, our MAGS Gretchen daughter who has a statistical outline that shows her in the top 3% of the population for MB and SMTI EPD's.
- This homozygous black daughter of MAGS Xyloid has a pedigree that will excite most modern Limousin enthusiasts. Such Limousin and Angus breed legends as DHVO Deuce, BOHI Rhonda 314R, Mytty In Focus and MAGS Gretchen within two immediate generations.
- Fertility, docility and marbling are specialties of ELCX Angel she ranks in the top 10% for SC and MB, as well as being in the top 20% docility.
- LOT 46A - BW: 70 lbs.

**46 ELCX Angel 507 A**

Lim-Flex (62) Cow DP/HB ELCX 507A LFF 2032290 02.03.13

	CED	BW	WW	YW	MA	CEM	SC	ST	DOC	CW	RE	YG	MS	SMTI
EPD	10	1.9	64	93	21	9	1	15	27	27	0.04	0.04	0.46	65.5
%Rank	30	60	55	60	85	10	10	50	20	55	>95	95	10	15

DHVO DEUCE 132R  
**MAGS XYLOID**  
 BOHI RHONDA 314R  
 MYTTY IN FOCUS  
**MAGS TAPESTRY**  
 MAGS GRETCHEN 143L  
 GPFF BLAQUE RULON  
 AMY JO DHAN 20L  
 EXLR NEW GENERATION 071M  
 DAVIS ROSETTA 9514  
 S A F FOCUS OF E R  
 MYTTY COUNTESS 906  
 EXLR DAKOTA 353G  
 MAGS GRETCHEN

**46a ELCX Choice 507 C**

Lim-Flex (50) Cow DP/HB ELCX 507C LFF 2081826 04.28.15

	CED	BW	WW	YW	MA	CEM	SC	ST	DOC	CW	RE	YG	MS	SMTI
EPD	9	1.7	64	98	22	7	0.9	15	16	30	0.22	0.04	0.73	75.56
%Rank	35	55	55	45	80	30	15	50	65	45	95	95	1	2

**AUTO WILL POWER 160X**  
 ELCX ANGEL 507 A  
 G A R PREDESTINED  
 AUTO REBECA 292S  
 MAGS XYLOID  
 MAGS TAPESTRY

**47 JEPS Zavannah 361Z**

Lim-Flex (56) Cow HP/HB JEPS 361Z LFF 2009346 03.02.12

	CED	BW	WW	YW	MA	CEM	SC	ST	DOC	CW	RE	YG	MS	SMTI
EPD	9	1.2	74	110	25	8	0.65	13	17	36	0.51	-0.07	0.32	64.39
%Rank	35	45	15	20	50	15	45	75	60	20	45	70	20	15

JCL LODESTAR 27L  
**LH RODEMASTER 338R**  
 VERMILION E BLACKBIRD9546  
 WULFS URBAN COWBOY 2149U  
**WLR TINY DANCER**  
 FLR TANGO  
 HUNTS HI-LITER 245G  
 LOGAN'S CHEERLEADER 280G  
 VERMILION 31 STACLER 3491  
 CH ENV BLACKBIRD C5941  
 WULFS REALTOR 1503R  
 WULFS MEADOW GRASS 2149M  
 MYTTY IN FOCUS  
 DIAMOND ROSE R044

**47a ELCX Charity Too 361 C**

Lim-Flex (46) Cow HP/DB ELCX 361C LFF 2081835 03.05.15

	CED	BW	WW	YW	MA	CEM	SC	ST	DOC	CW	RE	YG	MS	SMTI
EPD	10	0.7	68	104	30	7	0.82	16	16	32	0.32	-0.05	0.56	71.33
%Rank	30	35	35	30	15	30	25	40	65	35	80	80	4	4

**MAGS TEDDIE**  
 JEPS ZAVANNAH 361Z  
 G A R PREDESTINED  
 EXLR 199H  
 LH RODEMASTER 338R  
 WLR TINY DANCER

48

PBRS 28U

Lim-Flex (50) Cow HP/HB PBRS 28U LFF 1919125 03.02.08

	CED	BW	WW	YW	MA	CEM	SC	ST	DOC	CW	RE	YG	MS	SMTI
EPD	14	-0.7	57	100	24	8	-	-	-	29	0.19	0.05	0.6	68.93
%Rank	3	15	65	25	55	20	-	-	-	35	90	>95	4	5

HUNTS HI-LITER 245G WADDLES COBALT 3106  
**JCL LODESTAR 27L** TNUH MISS C245  
 LOGAN'S CHEERLEADER 280G COLE FIRST DOWN 46D  
 R P BUSHWACKER 3 944 TTCC CONFIDENCE MAKER  
**SEDGWICKS BLACKBIRD 2481** R P 3RD BUSHWACKER  
 SEDGWICKS BLACKBIRD 4811 R P NEW DESIGN MISS JUICE  
 T C DIVIDEND 963  
 SEDGWICKS BLACKBIRD 195

48a

ELCX Chance 28C

Lim-Flex (62) Bull DP/HB ELCX 28C LFM 2081827 04.21.15

	CED	BW	WW	YW	MA	CEM	SC	ST	DOC	CW	RE	YG	MS	SMTI
EPD	11	1.2	60	94	21	9	-	-	-	27	0.07	0.03	0.42	63.23
%Rank	20	45	75	55	85	10	-	-	-	55	>95	95	10	15

**MAGS XYLOID** DHVO DEUCE 132R  
 BOHI RHONDA 314R  
**PBRS 28U** JCL LODESTAR 27L  
 SEDGWICKS BLACKBIRD 2481

- P.E. 5.12.15 to 8.15.15 to MAGS Xyloid 3712X
- Homozygous polled and homozygous black
- This daughter of the multiple trait leading sire JCL Lodestar 27L is from a purebred Angus female
- She ranks in the top 5% of the breed for SMTI with a 68.93 and top 4% for marbling with a .60
- We love the power, performance and then overall balance that this brood cow has kept while nursing and raising her calves
- She sells bred to the once All American Futurity grand champion bull MAGS Xyloid 3712X
- LOT 48A - BW: 75 lbs.



JCL Lodestar 27L, sire of Lot 48 & 49.

49

PBRS 78U

Lim-Flex (50) Cow HP/HB PBRS 78U LFF 1919126 03.10.08

	CED	BW	WW	YW	MA	CEM	SC	ST	DOC	CW	RE	YG	MS	SMTI
EPD	12	-0.8	65	105	24	8	-	-	-	31	0.2	0.06	0.38	63.06
%Rank	10	10	35	20	55	20	-	-	-	30	90	>95	10	15

HUNTS HI-LITER 245G WADDLES COBALT 3106  
**JCL LODESTAR 27L** TNUH MISS C245  
 LOGAN'S CHEERLEADER 280G COLE FIRST DOWN 46D  
 SUMMITCREST EXT 1J67 TTCC CONFIDENCE MAKER  
**LOUP RIVER ENCHANGRESS 24** N BAR EMULATION EXT  
 LOUP RIVER ENCHANTRESS 26 SUMMITCREST ERICA 2B40  
 UMF CAVAN OF WYE 7915  
 LOUP RIVER ENCHANTRESS 00

- P.E. 5.12.15 to 8.15.15 to MAGS Xyloid 3712X
- Homozygous polled and homozygous black
- This proven producer has been a consistent and solid producer in the ELCX program. She is a daughter of multiple trait leading sire JCL Lodestar 27L and from a purebred Angus female
- She has earned a 65 for weaning weight, 105 for yearling weight and 63.06 for SMTI
- We admire her heavy structure, massive foot size and fleshing ability that she maintains for easily
- Her future calf sired by the once All American Futurity champion bull MAGS Xyloid 3712X will be a very nice coupon
- LOT 49A BW: 68 lbs.



MAGS Xyloid 3712X, service sire to Lots 48 & 49.

49a

ELCX Cut It Out 78C

Lim-Flex (62) Bull DP/HB ELCX 78C LFM 2081828 05.20.15

	CED	BW	WW	YW	MA	CEM	SC	ST	DOC	CW	RE	YG	MS	SMTI
EPD	10	0.3	64	97	21	9	-	-	-	28	0.07	0.04	0.32	60.66
%Rank	30	25	55	50	85	10	-	-	-	50	>95	95	20	25

**MAGS XYLOID** DHVO DEUCE 132R  
 BOHI RHONDA 314R  
**PBRS 78U** JCL LODESTAR 27L  
 LOUP RIVER ENCHANGRESS 24

# 50 ELCX Another Day 32 A

Lim-Flex (43) Cow	DP/DB	ELCX 32A	LFF 2081756	04.18.13
EPD	CED BW WW YW MA CEM SC ST DOC CW RE YG MS SMTI			
%Rank	9 0.2 57 95 24 7 - - - 28 0.23 0.01 0.61 69.5			
	35 25 85 55 60 30 - - - 50 95 90 3 10			

G A R PREDESTINED  
**AUTO WILL POWER 160X**  
 AUTO REBECA 292S

TOP LINE 0517  
**EF 801W**  
 EF CLEAR SAILING 362R

B/R NEW DESIGN 036  
 G A R EXT 4206  
 LESF ASPHALT 9N  
 EXLR REBECA 1019P  
 OAR NORTHERN LEGEND 0143  
 TOP LINE BLACKBIRD 0202  
 EXLR NEW GENERATION 071M  
 EXLR 231J

# 50a ELCX Converse 32C

Lim-Flex (53) Bull	DP/DB	ELCX 32C	LFM 2081823	04.25.15
EPD	CED BW WW YW MA CEM SC ST DOC CW RE YG MS SMTI			
%Rank	8 2.6 65 103 21 6 - - - 33 0.46 -0.04 0.47 67.16			
	50 75 50 35 85 45 - - - 30 55 80 10 10			

**WLR GAME OF THRONES**  
**ELCX ANOTHER DAY 32 A**

MAGS WIGGLER  
 WLR URSULA 499U  
 AUTO WILL POWER 160X  
 EF 801W

# 52 ELCX A Good Time 839 A

Lim-Flex (43) Cow	DP/DB	ELCX 839A	LFF 2077358	04.19.13
EPD	CED BW WW YW MA CEM SC ST DOC CW RE YG MS SMTI			
%Rank	8 1.9 63 92 27 4 0.76 16 12 27 0.25 -0.04 0.49 67.37			
	50 60 60 60 35 80 35 40 80 55 90 80 10 10			

G A R PREDESTINED  
**MAGS TEDDIE**  
 EXLR 199H

AUTO BLAQUE MAIL 132S  
**QUAIL RUN 839 U**  
 QUAIL RUN 234S

B/R NEW DESIGN 036  
 G A R EXT 4206  
 WULFS FANFARE 4055F  
 EXLR 558F  
 CLLL NEW DIRECTION 394P  
 EXAR EMPRESS 3185  
 QUAIL RUN BLACK LABEL BP  
 EMULOUS QUEEN CV 234

# 52a ELCX Calley 839C

Lim-Flex (46) Cow	DP/DB	ELCX 839C	LFF 20801830	03.13.15
EPD	CED BW WW YW MA CEM SC ST DOC CW RE YG MS SMTI			
%Rank	11 0 63 99 26 7 0.46 14 15 29 0.22 0.03 0.55 68.86			
	20 20 60 45 40 30 70 60 65 45 95 95 4 10			

**ELCX POSTMASTER 208Y**  
**ELCX A GOOD TIME 839 A**

MAGS WINSTON  
 SSTO SADIE 6854S  
 MAGS TEDDIE  
 QUAIL RUN 839 U

• P.E. 5.12.15 to 8.15.15 to MAGS Xyloid 3712X

• Double polled and double black

• This daughter of AUTO Will Power 160X ranks in the top 3% of the breed for marbling and top 10% for SMTI with a 69.50

• She is from a 50% Lim-Flex Ethern Farms female sired by the Angus sire Top Line 0517

• Sells bred to the All American Futurity champion bull MAGS Xyloid and sells her double polled, double black bull calf sired by WLR Game of Thrones

• LOT 50A - 72 lbs.

• P.E. 5.30.15 to 8.20.15 to TW Fire N Ice

• ELCX A Good Time 839A is spectacular two year old that has so many good years ahead of her, we are thrilled with the job she is doing with her first calf. Good times ahead with this uniquely bred female.

• Sired by MAGS Teddie, the GAR Predestined son out of the famous Magness and Bohi donor dam, EXLR 199H. 199H is a legend amongst Limousin enthusiasts, her \$50,000 valuation is due in part to the fact that she is the dam of MAGS Unheard Of, MAGS Undoing and EXLR Excellence.

• Sells with a March heifer calf by ELCX Postmaster. Postmaster serviced many of our heifers last year due to his calving ease, not only did the calves come easy, his dam's magnificent profile came shining through in many of them, including ELCX Calley 839C.

• LOT 52A - BW: 60 lbs.

# 51 MCBN Yeva 111Y

PB Limousin (100) Cow	DP/DB	MCBN 111Y	NPF 1998628	03.06.11
EPD	CED BW WW YW MA CEM SC ST DOC CW RE YG MS SMTI			
%Rank	7 2 71 97 37 10 0.5 11 10 30 0.28 0.03 0.19 58			
	60 60 25 50 1 3 60 90 85 45 90 95 30 30			

LVLS SECRET WEAPON 4408K  
**AUTO DOLLAR GENERAL 122R**  
 AUTO KYRIA 232K

MAGS SAVAGE  
**MCBN WYNDA 909W**  
 MISS SYES RESOLUTION 855N

LVLS FARMER 4G  
 LVLS 408H  
 AUTO HACKETT 702H  
 WULFS HAPPINESS 8136H  
 GPFF BLAQUE RULON  
 MAGS MANDA  
 EXLR RESOLUTION 7175L  
 MISS SYES 760 856J

# 51a ELCX Celine 111C

PB Limousin (87) Cow	DP/DB	ELCX 111C	NPF 2081836	04.12.15
EPD	CED BW WW YW MA CEM SC ST DOC CW RE YG MS SMTI			
%Rank	6 3.5 76 106 29 9 0.5 13 9 36 0.49 -0.04 0.13 57.84			
	70 90 10 25 20 10 60 75 90 20 50 80 40 30			

**WLR RELOAD**

**MCBN YEVA 111Y**

LH RODEMASTER 338R  
 MAGS PHANTOMS PRIZE  
 AUTO DOLLAR GENERAL 122R  
 MCBN WYNDA 909W

- P.E. 5.12.15 to 8.20.15 to WLR Game Of Thrones
- Oh my goodness, look at the maternal power in this AUTO Dollar General daughter! She offers a whopping 37 lbs of milk and a total maternal calculation of 37. Excellence in the form of a purebred four-year-old, who is at the peak of production.
- Brown Land and Cattle had several exceptional females from the Symens Brothers herd and they have produced leading females and herd bulls alike, just like MCBN Wynda 909W, the dam of MCBN Yeva 111Y.
- She sells with an April 2015 heifer calf by WLR Reload. WLR Reload is definitely one of the great show bulls that our friends and partners, Wies Limousins has ever shown. The past All-American Futurity Grand Champion bull is producing some very superb show prospects that will be exciting to watch develop and mature.
- LOT 51A - BW: 76 lbs.

# 53 ELCX Pasadena 296Z

Lim-Flex (50) Cow	HP/HB	ELCX 296Z	LFF 2031144	11.16.12
EPD	CED BW WW YW MA CEM SC ST DOC CW RE YG MS SMTI			
%Rank	8 0 66 99 21 8 0.6 17 11 28 0.72 -0.18 0.61 73.69			
	50 20 45 45 85 15 45 30 85 50 15 35 3 3			

HUNT CORNHUSKER 225N  
**MAGS WILD BUNCH**  
 MAGS RAPHAELA

BON VIEW NEW DESIGN 1407  
**EXLR BARB 170R**  
 EXLR BARB 1027M

HUNT MR JOCK 44J  
 HUNT KANDACE 19K  
 SUMMITCRESTHIGHPRIME 0H29  
 MAGS LADY ACE  
 B/R NEW DESIGN 036  
 BON VIEW PRIDE 664  
 EXLR BROADWAY 041E  
 C & C BARB

# 53a ELCX Count Down 296C

Lim-Flex (50) Bull	HP/HB	ELCX 296C	LFM 2081832	01.20.15
EPD	CED BW WW YW MA CEM SC ST DOC CW RE YG MS SMTI			
%Rank	11 -0.8 64 102 22 9 0.38 14 14 29 0.46 -0.04 0.61 71.95			
	20 15 55 35 80 10 80 60 70 45 55 80 3 4			

**ELCX POSTMASTER 208Y**

**ELCX PASADENA 296Z**

MAGS WINSTON  
 SSTO SADIE 6854S  
 MAGS WILD BUNCH  
 EXLR BARB 170R

- P.E. 5.12.15 to 8.20.15 to WLR Game Of Thrones
- Homozygous polled and homozygous black.
- Whenever you can get cattle that record .72 REA and .61 MB you better either hold on to it or make the tough decision to offer them in your sale, to assure that you selling the very best that you can.
- MB and SMTI rankings are so very important in today's marketplace and ELCX Pasadena 296Z ranks in the top 3% for MB and SMTI.
- Accompanying this fine young female is a January bull calf by our calving ease specialist ELCX Postmaster 208Y. His individual data is impressive, extends from -0.8 for BW to 102 for YW. He has herd sire prospect written all over him.
- LOT 53A - 68 lbs.



## 54 Quail Run 839U

Lim-Flex (50) Cow	DP/HB	QRRS 839U	LFF 1901102	03.26.08										
EPD	CED	BW	WW	YW	MA	CEM	SC	ST	DOC	CW	RE	YG	MS	SMTI
4	3.4	64	87	20	2	-	-	10	26	0.37	-0.06	0.18	56.12	
%Rank	80	80	40	55	80	90	-	-	80	45	65	80	25	25

CLLL NEW DIRECTION 394P  
**AUTO BLAQUE MAIL 132S**  
 EXAR EMPRESS 3185

GPFF BLAQUE RULON  
 PRRK EXTRA BLAQUE STAR  
 BON VIEW NEW DESIGN 1407  
 KTK 9440 EMPRESS 108  
 JCL BLACK OUT  
**QUAIL RUN 234S**  
 EMULOUS QUEEN CV 234

LKCC SMITH CATTLE 418A  
 CLEARVIEW EMULOUS 124  
 EMULOUS QUEEN C V 185

## 54a ELCX Chase 83C

Lim-Flex (62) Bull	DP/DB	ELCX 83C	LFM 2081833	04.02.15										
EPD	CED	BW	WW	YW	MA	CEM	SC	ST	DOC	CW	RE	YG	MS	SMTI
5	3.5	72	101	20	4	0.51	13	9	34	0.54	-0.09	0.12	56.7	
%Rank	80	90	20	40	90	80	60	75	90	25	40	65	40	65

WLR RELOAD

LH RODEMASTER 338R  
 MAGS PHANTOMS PRIZE  
**QUAIL RUN 839 U**  
 AUTO BLAQUE MAIL 132S  
 QUAIL RUN 234S

## 56 ELCX April 320A

Lim-Flex (43) Cow	HP/HB	ELCX 320A	LFF 2042998	04.20.13										
EPD	CED	BW	WW	YW	MA	CEM	SC	ST	DOC	CW	RE	YG	MS	SMTI
10	0.5	65	105	29	9	0.65	12	9	33	0.35	0.09	0.8	78.23	
%Rank	30	30	50	30	20	10	45	85	90	30	80	>95	1	1

G A R PREDESTINED  
**AUTO WILL POWER 160X**  
 AUTO REBECA 292S

B/R NEW DESIGN 036  
 G A R EXT 4206  
 LESF ASPHALT 9N  
 EXLR REBECA 1019P  
 LVLS SECRET WEAPON 4408K  
**MAGS TAMRA**  
 HA PATSY 1121

AUTO DOLLAR GENERAL 122R  
 TWIN VALLEY PRECISIONE161  
 HA PATSY 1033

## 56a ELCX Carmen 320C

Lim-Flex (53) Cow	HP/HB	ELCX 320C	LFF 2081821	05.02.15										
EPD	CED	BW	WW	YW	MA	CEM	SC	ST	DOC	CW	RE	YG	MS	SMTI
8	1.4	69	108	23	8	0.62	-	-	36	0.52	-0.01	0.56	71.37	
%Rank	50	50	30	20	70	15	45	-	20	45	90	4	4	

WLR GAME OF THRONES

MAGS WIGGLER  
 WLR URSULA 499U  
**ELCX APRIL 320A**  
 AUTO WILL POWER 160X  
 MAGS TAMRA

- P.E. 5.12.15 to 8.20.15 to WLR Game Of Thrones
- Quail Run 839U has proven herself year in and year out, her daughter ELCX A Good Time 839A is highlighted as Lot XX in this offering.
- 839U has earned a 104 WW ratio and 105 YW ratio for the five calves that she has raised.
- Homozygous black, 50% Lim-Flex.
- Sells with a herd sire prospect by All-American Futurity winner, WLR Reload. Date of birth, April 2, 2015
- LOT 54A - BW: 78 lbs.

## 55 ELCX Apple 233A

Lim-Flex (75) Cow	HP/DB	ELCX 233A	LFF 2081754	04.02.13										
EPD	CED	BW	WW	YW	MA	CEM	SC	ST	DOC	CW	RE	YG	MS	SMTI
6	3	59	90	25	6	-	-	-	27	0.12	-0.03	0.14	53.20	
%Rank	70	85	75	65	50	45	-	-	55	>95	85	35	50	

MAGS SCOTLAND  
**GPFX SCOTCH PROMISE**  
 SBL SPECIAL PROMISE 426S

BR MIDLAND  
 MAGS MARQUEE  
 BOHI SPECIAL DESIGN 14  
 BOHI PROMISE 426P  
 AUTO BLACK DAKOTA 129J  
 EXLR LUVLY 084F  
 ARER 18A POLLED ADAM  
 CHBL CANDY CANE

EXLR NEW GENERATION 071M  
**DPBN NEW VIBRATIONS 33R**  
 GPFF 27E

- P.E. 5.30.15 to 8.20.15 to TW Fire N' Ice
- Homozygous polled and double black
- This 75% Lim-Flex female is sired by the MAGS Scotland son GPFX Scotch Promise and is from a daughter of the once highly syndicated sire ELXR New Generation 071M
- This female has been very easy to maintain in her condition and seems to also put her performance into her offspring
- LOT 55A - BW: 68 lbs.

## 55a ELCX Capt Church 233C

Lim-Flex (75) Bull	DP/DB	ELCX 233C	LFM 2081877	04.28.15										
EPD	CED	BW	WW	YW	MA	CEM	SC	ST	DOC	CW	RE	YG	MS	SMTI
7	2.7	60	89	21	8	-	-	-	26	0.04	-0.01	0.20	55.46	
%Rank	60	80	75	70	85	15	-	-	60	>95	90	30	40	

MAGS XYLOID

DHVO DEUCE 132R  
 BOHI RHONDA 314R  
**ELCX APPLE 233 A**  
 GPFX SCOTCH PROMISE  
 DPBN NEW VIBRATIONS 33R

- P.E. 5.12.15 to 8.15.15 to MAGS Xyloid 3712X
- Look at the EPD presentation on this homozygous polled and homozygous polled heifer! She ranges from a .5 BW to 105 for YW, in addition to being in the 20% of the breed from milk.
- ELCX April's birth, growth and maternal numbers are astounding but her MB and SMTI data is what puts her into the elite category. She ranks in the top 1% of the breed for both.
- Being a MAGS Tamra daughter, she is a maternal sister the ELCX Remington, the show bull that was so successfully campaigned on the MOE circuit by Free Bird Farms, TN.
- LOT 56A - BW: 78 lbs.



MAGS Tamra, dam of Lot 56.



## 57 ELCX Emma 301Z

Lim-Flex (75) Cow DP/Black DPBN 301Z LFF 2082201 04.28.12

EPD	CED	BW	WW	YW	MA	CEM	SC	ST	DOC	CW	RE	YG	MS	\$MTI
6	4.3	67	98	21	6	0.17	14	5	33	0.29	-0.06	0.07	53.23	
%Rank	70	>95	40	45	85	45	95	60	>95	30	85	75	45	50

BR MIDLAND  
**MAGS SCOTLAND**  
 MAGS MARQUEE

TWIN VALLEY PRECISIONE 161  
 BR ROYAL LASS 7036-19  
 ELXR DAKOTA 353G  
 MAGS JEWEL  
 BTAP DVFC MONELINE 404AP  
**DPBN STRAWBERRY 183T**  
 DPBN FALL LEAVES 83R

ELXR NEW GENERATIONS 071M  
 DVFC REMI 931J

- P.E. 5.08.15 to 8.10.15 to AUTO Will Power 160X
- Black and double polled
- This 75% Lim-Flex female is sired by the once national top selling and national champion bull MAGS Scotland
- She has a stout made Lim-Flex bull sired by the once All American Champion sire WLR Reload
- This young bull calf is a very herd sure prospect

## 57a ELCX 301C

Lim-Flex (68.5) Bull Polled/DB DPBN 301C -- 03.05.15

EPD	CED	BW	WW	YW	MA	CEM	SC	ST	DOC	CW	RE	YG	MS	\$MTI
6	4.0	74	106	21	7	0.34	14	6	38	0.50	-0.09	0.07	55.32	
%Rank	-	-	-	-	-	-	-	-	-	-	-	-	-	-

**WLR RELOAD**

LH RODEMASTER 338R  
 MAGS PHANTOMS PRIZE  
 MAGS SCOTLAND  
**ELCX EMMA 301Z**  
 DPBN STRAWBERRY 183T

## 58 Spring Crks Kandy Kiss

Lim-Flex (50) Cow Polled/DB BMAS 3022A LFF 2037271 03.16.13

EPD	CED	BW	WW	YW	MA	CEM	SC	ST	DOC	CW	RE	YG	MS	\$MTI
12	0	73	110	21	5	0.55	14	17	35	0.63	-0.02	0.04	53.61	
%Rank	15	20	20	20	85	65	60	60	60	25	25	85	50	50

O C C EMBLAZON 854E  
**RITO 6EM3 OF 4L1 EMBLAZON**  
 RITA 4L1 OF 2536 208

D H D TRAVELER 6807  
 DIXIE ERICA OF C H 1019  
 BON VIEW DESIGN 208  
 G A R PRECISION 2536  
 WULFS GUARDIAN 5074G  
**EXLR KANDY KISS N839**  
 LOGAN'S KANDY KISS 1116K

WULFS KIOWA 3361K  
 WULFS CASUAL 3161C  
 JCL BLACK OUT  
 CANE RIDGE GINA 6536F

- P.E. 5.12.15 to 8.15.15 to MAGS Xyloid 3712X
- RITO 6EM3 of 4L1 Emblazon, in our opinion sired some of the very best Lim-Flex cattle in our breed. The cattle were moderate framed, easy fleshing and are making tremendous cows, similar to BMAS 3022A.
- With double digit CED and an exceptional 73 WW and 110 YW epd, this female is ready to go to work for you as a brood cow or a donor female.

## 58a ELCX Cat Daddy 22C

Lim-Flex (43) Bull DP/DB ELCX 22C LFM 2081822 03.06.15

EPD	CED	BW	WW	YW	MA	CEM	SC	ST	DOC	CW	RE	YG	MS	\$MTI
10	0.7	69	106	22	5	0.68	15	11	34	0.52	0.01	0.53	70.07	
%Rank	30	35	30	25	80	65	45	50	85	25	45	90	5	5

**AUTO WILL POWER 160X**

G A R PREDESTINED  
 AUTO REBECA 292S  
**RITO 6EM3 OF 4L1 EMBLAZON**  
**EXLR KANDY KISS N839**

- Spring Crks Kandy Kiss sorts herself out when we are going through cattle, she has a really neat profile and is super functional in her ability.
- LOT 58A - BW: 62 lbs.

## 59 ELCX Utility 723Z

Lim-Flex (31) Cow DP/DB ELCX 723Z LFF 2032517 02.22.12

EPD	CED	BW	WW	YW	MA	CEM	SC	ST	DOC	CW	RE	YG	MS	\$MTI
10	0.8	60	96	26	6	0.63	15	8	28	0.52	-0.15	0.7	74.89	
%Rank	30	35	75	50	40	45	45	50	90	50	45	45	2	2

G A R PREDESTINED  
**MAGS UTLEY**  
 ELXR 199H

B/R NEW DESIGN 036  
 G A R EXT 4206  
 WULFS FANFARE 4055F  
 ELXR 558F  
 B C MARATHON 7022  
 O C C BLACKBIRD 796F  
 EXAR NEW LOOK 2971  
 ELXR SHOWCASE 592N

- P.E. 5.12.15 to 8.15.15 to MAGS Xyloid 3712X
- ELCX Utility 723Z is a direct daughter of MAGS Utley, the Hayhook Limousin investment that has been doing a bang up job for them. He is a GAR Predestined out of the famed ELXR 199H.
- This productive neat 3 year old brings plenty of carcass strength to a mating equation and will give you plenty of options when she is ready to breed back.

## 59a ELCX Center Cut 723C

Lim-Flex (53) Bull DP/DB ELCX 723C LFM 2081825 03.20.15

EPD	CED	BW	WW	YW	MA	CEM	SC	ST	DOC	CW	RE	YG	MS	\$MTI
9	3.5	61	92	22	8	0.61	12	19	27	0.23	-0.07	0.47	66.08	
%Rank	35	90	70	60	80	15	45	85	50	55	95	70	10	10

**MAGS XYLOID**

DHVO DEUCE 132R  
 BOHI RHONDA 314R  
 MAGS WOOSH  
**ELCX UTILITY 723 Z**  
 HAHK WOOSH 723W

- HAHK Woosh is a direct daughter of BC 7022 Raven 7965, the moderate sire is structurally correct and smooth muscled.
- LOT 59A - BW: 85 lbs.

## 60 LVLS Yell Squad 1942Y

Lim-Flex (43) Cow	DP/DB	LVLS 1942Y	LFF 1988983	02.20.11										
CED	BW	WW	YW	MA	CEM	SC	ST	DOC	CW	RE	YG	MS	SMTI	
EPD	11	-0.5	53	87	25	11	0.75	-	-	21	0.52	-0.17	0.47	64.62
%Rank	20	15	95	75	50	1	35	-	-	80	45	40	10	15

BERMILION DATELINE 7078  
**LAGRAND VRD 7185**  
 LAGRAND LUCY 4206  
  
 LVLS DURAMAX 2408M  
**LVLS 942P**  
 LVLS DEL MONICA 942D

CONNELLY DATELINE  
 VERMILION BLACKBIRD 5044  
 BON VIEW NEW DESIGN 1407  
 ROTH LUCY 1533  
 LVLS DOUBLDOWN 3615K  
 LVLS MS STABILIZER 2408E  
 HC POLLED BLACK MAGIC  
 LVLS VIRGINIA 442X

- P.E. 5.12.15 to 8.20.15 to WLR Game Of Thrones
- Double polled and double black
- This young 43% Lim-Flex brood cow is just now in the prime years of her production
- She is sired by Lagrand VRD 7185 and ranks in the top 1% of the breed for CEM and top 10% of the breed for marbling with a .47 and 15% for SMTI with a 64.62

## 60a ELCX Cal 1942C

Lim-Flex (59) Bull	DP/DB	ELCX 1942C	LFM 2081834	04.10.15										
CED	BW	WW	YW	MA	CEM	SC	ST	DOC	CW	RE	YG	MS	SMTI	
EPD	8	1.2	66	101	23	4	0.62	-	-	32	0.61	-0.14	0.27	60.94
%Rank	50	45	45	40	70	10	45	-	-	35	30	50	25	25

**WLR RELOAD**  
**LVLS YELL SQUAD 1942Y**

LH RODEMASTER 338R  
 MAGS PHANTOMS PRIZE  
 LAGRAND VRD 7185  
 LVLS 942P

- This brood cow sells with her 59% Lim-Flex double polled, double black bull sired by WLR Reload
- LOT 60A - BW: 70 lbs.

## 62 DPBN Red Money 33T

PB Limousin (95) Cow	DP/Red	DPBN 33T	NPF 1871333	03.29.07										
CED	BW	WW	YW	MA	CEM	SC	ST	DOC	CW	RE	YG	MS	SMTI	
EPD	2	4.7	63	89	23	4	-	13	13	29	0.56	-0.21	-0.17	44.57
%Rank	95	95	45	50	60	70	-	70	65	35	30	35	80	70

GPFF BLAQUE RULON  
**BTAP DVFC MONEYLINE 404AP**  
 FWLY HIDDEN RUMORS  
  
 ARER 18A POLLED ADAM  
**GPFF 27E**  
 CHBL CANDY CANE

BLACK DIAMOND  
 QUAIL RUN RAMONA BP  
 CHAZ FIRST CHOICE 6004F  
 CLLL RUMORS  
 POLLED PACK LEADER 1182U  
 MISS WOLFETTE 3060R  
 OAK LEAF OH HENRY  
 SHEN KEY CANDY

- P.E. 5.20.15 to 8.15.15 to WLR Reload
- Red and double polled
- This brood cow has been a solid producer at Edwards Land & Cattle Co. She is sired by BTAP DVFC Moneyline 404AP
- This red purebred brood cow is a solid producer and one you will appreciate as she sells with her 2.22.15 black and double polled bull sired by BOHI Top Dollar 7144T

## 62a ELCX Country Dollar 33C

PB Limousin (100) Bull	DP/Black	ELCX 33C	NPM 2081831	02.22.15										
CED	BW	WW	YW	MA	CEM	SC	ST	DOC	CW	RE	YG	MS	SMTI	
EPD	3	5.5	70	99	30	7	0.40	12	18	35	0.38	-0.06	0.03	52.60
%Rank	95	>95	30	45	15	30	70	85	55	25	70	75	55	50

**BOHI TOP DOLLAR 7144T**  
**DPBN RED MONEY 33T**

AUTO DOLLAR GENERAL 122R  
 AUTO BLACK DAKOTA 129J  
 BTAP DVFC MONEYLINE 404AP  
 GPFF 27E

## 61 LVLS Young Lady 8713Y

PB Limousin (100) Cow	DP/DB	LVLS 8713Y	NPF 1988581	01.15.11										
CED	BW	WW	YW	MA	CEM	SC	ST	DOC	CW	RE	YG	MS	SMTI	
EPD	5	2.9	68	107	29	7	0.45	16	13	38	0.02	0.04	-0.1	46.66
%Rank	70	75	25	15	20	30	55	35	65	10	>95	95	60	60

KAJO RESPONDER 120R  
**AHCC WESTWIND W544**  
 AHCC MISS WULF HUNT R544  
  
 JCL BLACK OUT  
**LVLS 8713M**  
 LVLS JENI 601V

JCL LODESTAR 27L  
 KAJO SHERYL SWOOPS 11H  
 COLE WULF HUNT  
 AHCC MISS OUTCROSS N844  
 LKCC TOMAHAWKS TOUCHDOWN  
 JCL MADELINE  
 FMLI STRETCH'S CHALLENGER  
 GBCL 1T

- P.E. 5.12.15 to 8.20.15 WLR Game Of Thrones
- Double polled and double black
- LVLS Young Lady 8713Y is a purebred daughter of the now deceased and breed popular purebred sire AHCC Westwind W544 sire
- This brood cow has done a top job for us in production and sells bred for another calf sired by WLR Game of Thrones

## 61a ELCX Cool Aid 713C

PB Limousin (87) Cow	DP/DB	ELCX 713C	NPF 2081878	04.05.15										
CED	BW	WW	YW	MA	CEM	SC	ST	DOC	CW	RE	YG	MS	SMTI	
EPD	5	4	74	110	25	7	0.47	16	10	40	0.36	-0.04	-0.01	52.32
%Rank	80	95	15	20	50	30	70	40	85	10	75	80	60	55

**WLR RELOAD**  
**LVLS YOUNG LADY 8713Y**

LH RODEMASTER 338R  
 MAGS PHANTOMS PRIZE  
 AHCC WESTWIND W544  
 LVLS 8713M

- Also selling is her 87% Limousin heifer sired by WLR Reload, the once All American Futurity grand champion bull
- This three-in-one package will be a something to really take a look at come sale day
- LOT 61A - BW: 80 lbs.

## 63 ELCX Theresa 200A

Lim-Flex (43) Cow	DP/DB	ELCX 200A	LFF 2034554	04.25.13										
CED	BW	WW	YW	MA	CEM	SC	ST	DOC	CW	RE	YG	MS	SMTI	
EPD	9	1.1	60	94	24	6	0.6	-	-	28	0.42	-0.05	0.71	74.54
%Rank	35	40	75	55	60	45	45	-	-	50	65	80	2	2

G A R PREDESTINED  
**AUTO WILL POWER 160X**  
 AUTO REBECA 292S  
  
 LVLS 8211U  
**SBLX XABAT**  
 SBLX UNDERTHECOVERS 201U

B/R NEW DESIGN 036  
 G A R EXT 4206  
 LESF ASPHALT 9N  
 EXLR REBECA 1019P  
 COLE WULF HUNT  
 SILVER OAK 616 061  
 G A R PREDESTINED  
 ELMW GINNIE P58G

- P.E. 5.12.15 to 8.15.15 to MAGS Xyloid 3712X
- ELCX Theresa 200A is blessed with amazing grandparents, there are very few cattle that will be offered for public auction this year that have the genetics present in the special lot. She is a known granddaughter of GAR Predestined, AUTO Rebeca 292S, LVLS 8211U and SBLX Underthecovers 201. These 4 influential animals have generated millions of dollars in both the Angus and Limousin breeds over the past decade.

## 63a ELCX Carter 200C

Lim-Flex (53) Bull	DP/DB	ELCX 200C	LFM 2081824	04.20.15										
CED	BW	WW	YW	MA	CEM	SC	ST	DOC	CW	RE	YG	MS	SMTI	
EPD	8	2.6	67	102	20	6	0.6	-	-	33	0.56	-0.07	0.52	69.73
%Rank	50	75	40	35	90	45	45	-	-	30	35	70	5	10

**WLR GAME OF THRONES**  
**ELCX THERESA 200A**

MAGS WIGGLER  
 WLR URSULA 499U  
 AUTO WILL POWER 160X  
 SBLX XABAT

- Ranking in the top 2% of the breed for MB epd and SMTI makes this exceptional females appeal even that much greater.
- A direct daughter of AUTO Will Power 160X, the \$35,000 half interest sire that is being used across the country so successfully.
- LOT 63A - BW: 70 lbs.



Morris

LOT 64

**64** Quail Run 110W

Lim-Flex (50) Cow	DP/DB	QRRS 110W	LFF 1929187	03.18.09									
CEP	BW	WW	YW	MA	CEM	SC	ST	DOC	CW	RE	YG	MS	SMTI
7	0.6	59	83	22	4	-	-	4	19	0.33	-0.1	0.26	57.95
%Rank	50	30	60	60	70	70	-	-	95	70	75	70	20

CLLL NEW DIRECTION 394P  
**AUTO BLAQUE MAIL 132S**  
 EXAR EMPRESS 3185  
 QUAIL RUN BLACK LABEL BP  
**QUAIL RUN 715T**  
 OAK FRONT ERICA ANN 62  
 GPFF BLAQUE RULON  
 PRRK EXTRA BLAQUE STAR  
 BON VIEW NEW DESIGN 1407  
 KTK 9440 EMPRESS 108  
 JCL BLACK OUT  
 LKCC SMITH CATTLE 418A  
 DIAMOND AMBUSH 866K  
 OAK FRONT ERICA ANN A458

- P.E. 12.29.14 to 5.20.15 to WLR Game of Thrones
- What an amazing female that we have here in this daughter of AUTO Blaque Mail 132S
- She is so deep bodied, sound made and very broody in her appearance
- Quail Run 110W truly stands for what is all good about Lim-Flex cattle
- Her future calf will be sired by WLR Game of Thrones, a prominent son of MAGS Wiggler

## 65 ELCX Shaina 258Z

Lim-Flex (56) Cow HP/HB ELCX 258Z LFF 2034553 10.12.12

	CED	BW	WW	YW	MA	CEM	SC	ST	DOC	CW	RE	YG	MS	\$MTI
EPD	9	1.5	62	88	17	4	0.62	14	9	24	0.37	-0.07	0.18	55.61
%Rank	30	45	45	50	95	70	30	55	80	50	65	80	25	25

SCHILLING'S TALLADEGA  
**CALO BRICKYARD 902W**  
 EXG E839 1407 M175 LS

LH RODEMASTER 338R  
**LH TWISTED LADY 258T**  
 LH RITUAL 217R

KRVN NASKAR 013N  
 RCSX RAINY DAY 80R  
 BON VIEW NEW DESIGN 1407  
 PAF 4019 6807 E839  
 JCL LODESTAR 27L  
 VERMILION E BLACKBIRD9546  
 GPFF BLAQUE RULON  
 CHR BLACK HEIRESS 084N

- P.E. 12.29.14 to 5.20.15 to WLR Game of Thrones
- Homozygous polled and homozygous black
- This daughter of the once national champion Lim-Flex sire CALO Brickyard 902W is from the elite donor LH Twisted Lady 258T, a proven daughter of LH Rodemaster 338R
- This female combines the best of genetics that have been leaders in the show ring and for sure in terms of performance

## 66 ELCX Beach Party 380B ET

Lim-Flex (75) Cow DP/DB ELCX 380B LFF 2074240 01.18.14

	CED	BW	WW	YW	MA	CEM	SC	ST	DOC	CW	RE	YG	MS	\$MTI
EPD	10	1.0	75	114	30	8	0.42	14	18	39	0.41	-0.07	0.24	61.99
%Rank	30	40	15	10	15	15	70	60	55	15	65	70	25	20

AUTO DOLLAR GENERAL 122R  
**MAGS THE GENERAL**  
 KXLR LUVLY 821M

JLWM BULLITT 5126R  
**JWM LICORICE SPRICE 909W**  
 JL JESTRESS P13 OF K17

LVLS SECRET WEAPON 4408K  
 AUTO KYRIA 232K  
 AUTO BLACK DAKOTA 129J  
 EXLR LUVLY 084F  
 LOGAN'S CHEERLEADER 280G  
 EXLR 402J  
 B/R NEW FRONTIER 095  
 J L 365 JESTRESS K17

- P.E. 1.08.15 to 6.01.15 to TW Fire N Ice
- Polled and double black
- Sired by the purebred sire of champions MAGS The General
- This young 75% Lim-Flex heifer is hugged numbered and ranks in the top 10% for YW with a 114 and TM with a 67
- She is well above average in a majority of all economically important traits
- She is made well, bred well and has an amazing look and presence about her

## 67 RVF Zoloft 572Z

Lim-Flex (50) Cow DP/HB JJKH 572Z LFF 2014799 02.20.12

	CED	BW	WW	YW	MA	CEM	SC	ST	DOC	CW	RE	YG	MS	\$MTI
EPD	8	1.7	62	99	27	6	0.76	11	11	31	0.5	-0.08	0.43	65.08
%Rank	50	55	65	45	35	45	35	90	85	40	50	70	10	15

S A V 8180 TRAVELER 004  
**S A V NET WORTH 4200**  
 S A V MAY 2410

HMMPLD PLD SARGE 658S  
**YOUNG 'N RESTLESS 495W**  
 JJKH NEW IDOL 226N

SITZ TRAVELER 8180  
 BOYD FOREVER LADY 8003  
 SAF 598 BANDO 5175  
 S A V MAY 6269  
 AUTO LONELY NITES 720P  
 AUTO BLACK BIRD 458P  
 WCF COOKIE TIME  
 JJKH FOXY LADY 609F

- P.E. 1.08.15 to 6.01.15 to TW Fire N Ice
- SAV Net Worth is the supreme visual muscle bull of the Angus breed and is known nationwide for growth and mass, he consistently ranked amongst the most popular sires for nearly a decade.
- We appreciate the actual birth weight of this female at a nominal 64 lbs.
- Homozygous black

## 68 RVF Abby 636A

Lim-Flex (50) Cow DP/HB JJKH 636A LFF 2037617 10.01.13

	CED	BW	WW	YW	MA	CEM	SC	ST	DOC	CW	RE	YG	MS	\$MTI
EPD	6	3.3	73	117	26	5	0.75	12	11	44	0.71	-0.09	0.42	68.17
%Rank	70	90	20	10	40	65	35	85	85	4	15	65	10	10

S A V NET WORTH 4200  
**MAGS YU THE MAN**  
 MAGS SEVENTEEN

S A V NET WORTH 4200  
**RVF INVEST 'N FUTURE 536Y**  
 UR SO FINE 477W

S A V 8180 TRAVELER 004  
 S A V MAY 2410  
 GPFF BLAQUE RULON  
 MAGS MANDA  
 S A V 8180 TRAVELER 004  
 S A V MAY 2410  
 WIN VUE LODESTAR HP 602  
 JJKH PUMPKIN PRIZE 384S

- P.E. 12.05.14 to 5.15.15 to PBRS Add It Up 3120A
- Homozygous black
- RVF Abby 636A has income potential written all over her as a future herd sire dam, she is in the top 4 % of the breed for CW, top 15% for REA and top 10% for MB.
- 117 YW epd will be exciting to work with as she matures.

## 69 CJLM Miss Kentucky 640Z

PB Limousin (87) Cow DP/HB CJLM 640Z NPF 2010194 01.01.12

	CED	BW	WW	YW	MA	CEM	SC	ST	DOC	CW	RE	YG	MS	\$MTI
EPD	6	2.5	68	98	29	7	0.3	10	6	31	0.41	-0.07	-0.06	48.72
%Rank	70	75	35	45	20	30	80	95	95	40	65	70	70	70

AUTO DOLLAR GENERAL 122R  
**BOHI TITLELIST 7050T**  
 CARROUSELS PINA COLADA

AUTO BLACK CROSS 133P  
**AUTO MISS MISSOURI 640S**  
 KRVN NABBED 320N

LVLS SECRET WEAPON 4408K  
 AUTO KYRIA 232K  
 AUTO BLACK DAKOTA 129J  
 ELMW GINNIE P58G  
 AUTO THE BACHELOR 158L  
 EXLR LUVLY 087F  
 GPFF BLAQUE RULON

- P.E. 12.29.14 to 5.20.15 to WLR Game of Thrones
- This homozygous black BOHI Titlelist 7050T female that was bred in the Massey Limousin program. CJLM Miss Kentucky 640Z is a maternal sister to and CJLM Miss America out of AUTO Miss Missouri.
- She is an 87% Lim-Flex three-year-old, that offers a 29 MK epd and a 63 TM EPD.

## 70 Woodbrooks Yuanita 1164Y

PB Limousin (100) Cow DP/DB WBBK 1164K NPF 2012594 10.10.11

	CED	BW	WW	YW	MA	CEM	SC	ST	DOC	CW	RE	YG	MS	\$MTI
EPD	6	3.1	64	93	25	12	0.72	17	14	30	0.48	-0.2	-0.09	47.6
%Rank	60	75	40	40	45	1	20	30	60	30	45	40	60	55

WULFS NASA 1212N  
**WULFS UPPERMOST 6196U**  
 WULFS SKYLA 6196S

MEADO-WEST HERITAGE 842H  
**JLWM JUANITA 2250M**  
 QUAIL RUN KIMBALL BP

WULFS FANFARE 4055F  
 MISS WULFETTE 1212L  
 COLE WULF HUNT  
 WULFS JEWELRY 9237J  
 WULFS RAMBLER 8400X  
 MEADO-WEST 883E  
 ORION  
 LKCC UNWANTED 126C

- P.E. 12.29.14 to 5.20.15 to WLR Game of Thrones
- With cattle inventories at an all-time low, any opportunity to acquire quality bred females is an opportunity not to be missed. This three-year-old is heading into the prime of her life, we have done the hard work, now you can reap the benefits of her productive years.
- JLWM Juanita 2250M is a result of the a highly maternal breeding program at JP's Lee Hill Farms, her progeny such as Woodbrook Yuanita have absolutely crushed herd averages. 7 offspring have an average weaning weight ratio of 108.



LOT 71

**71 WIN VUE** *Blaque Rita 343*

PB Limousin (93) Cow	DP/DB	WNVU 343A	NPF 2051765	10.05.13										
EPD	CED	BW	WW	YW	MA	CEM	SC	ST	DOC	CW	RE	YG	MS	SMTI
7	1.9	58	91	27	7	0.08	11	12	27	0.31	-0.08	0.12	52.64	
%Rank	60	60	80	65	35	30	>95	90	80	55	85	70	40	50

EXLR NEW GENERATIONS 071M AUTO BLACK DAKOTA 129J  
**MAGS SASQUATCH** EXLR LUVLY084F  
 MAGS FRUITFUL 487M EXLR LIMITED EDITION 765J  
 WULFS FRUITFUL 6052F  
 LEWIS RILIAN 384R JCL LODESTAR 27L  
**TMCK BLAQUE RITA 569U** LEWIS MISS ALEXIS 384D  
 WIN VUE BLAQUE RITA 570R GPFF BLAQUE RULON  
 WIN VUE RAMBLIN RUBY 04K

- P.E. 12.05.14 to 5.15.15 to PBRS Add It Up 3120A
- Double polled and double black
- Here is a very appealing purebred Limousin daughter of the once highly syndicated sire MAGS Sasquatch and from a daughter of Lewis Rilian
- We love the pedigree and amount of rib shape and volume found within this female. She has been mated to the ELCX junior herd sire and son of the highly syndicated sire PBRS Milestone
- This brood cow has the rib shape, ease of condition and doing ability that any purebred conscious breeder will appreciate



TW Fire N' Ice, the service sire to Lot 72.

**72 Woodbrooks** *Yuanita 1164Y*

PB Limousin (100) Cow	DP/DB	WBBK 1164Y	NPF 2012594	10.10.11										
EPD	CED	BW	WW	YW	MA	CEM	SC	ST	DOC	CW	RE	YG	MS	SMTI
6	3.1	64	93	25	57	0.72	17	14	30	0.48	-0.20	-0.09	47.60	
%Rank	60	75	40	40	45	1	20	30	60	30	45	40	60	55

WULFS NASA 1212N WULFS FANFARE 4055F  
**WULFS UPPERMOST 6196U** MISS WULFETTE 1212L  
 WULFS SKYLA 6196S COLE WULF HUNT  
 WULFS JEWELRY 9237J  
 MEADO-WEST HERITAGE 842H WULFS RAMBLER 8400X  
**JLWM JUANITA 2250M** LKCC TOMAHAWKS TOUCHDOWN  
 QUAIL RUN KIMBALL BP ORION  
 LKCC UNWANTED 126C

- P.E. 1.08.15 to 6.01.15 to TW Fire N Ice
- Double polled and double black
- Sired by the Wulf's Nasa son Wulf's Uppermost 6196U and from Wulf's Skyla 6196S
- She is from a daughter of Meado-West Heritage 842H
- This brood cow is in the prime years of her production and has all the credentials and criteria needed to continue in any program at any level

**Ref. PBRS Add It Up 3120A**

Lim-Flex (60) Bull	DP/HB	PBRS 3120A				LFM 2041418				04.21.13				
CED	BW	WW	YW	MA	CEM	SC	ST	DOC	CW	RE	YG	MS	\$MTI	
EPD	8	2.9	69	109	29	4	0.60	12	15	39	0.29	0.05	0.39	64.67
%Rank	50	80	30	20	20	80	45	85	65	15	85	95	15	15

PBRS MILESTONE 137Y

PBRS Y NOT ME 165Y

LH U HAUL 135U  
MAGS UNIVERSAL TIME  
SPRNG CRKS URLACHER 311U  
CARROUSELS PINA COLADA



MAGS Xyloid



WLR Reload



AUTO Will Power 160X

**Ref. MAGS Xyloid**

Lim-Flex (75) Bull	DP/HB	MAGS 3712X				LFM 1958319				03.07.10				
CED	BW	WW	YW	MA	CEM	SC	ST	DOC	CW	RE	YG	MS	\$MTI	
EPD	8	2.3	62	88	18	10	0.60	9	30	25	-0.05	0.01	0.25	57.71
%Rank	45	65	60	65	90	10	40	95	10	60	>95	25	30	

DHVO DEUCE 132R

BOHI RHONDA 314R

QUAIL RUN RAMONA BP  
AMY JO DHAN 20L  
EXLR NEW GENERATION 071M  
DAVIS ROSETTA 9514



P Bar S Add It Up 3120A

**Ref. WLR Reload**

Lim-Flex (75) Bull	HP/EB	BJLR 908Y				LFM 1991065				05.02.11				
CED	BW	WW	YW	MA	CEM	SC	ST	DOC	CW	RE	YG	MS	\$MTI	
EPD	5	3.6	80	114	21	7	0.50	15	7	42	0.70	-0.11	0.07	57.41
%Rank	75	90	10	15	75	35	50	40	85	15	20	60	40	35

LH RODEMASTER 338R

MAGS PHANTOMS PRIZE

JCL LODESTAR 27L  
VERMILION E BLACKBIRD9546  
GPFF BLAQUE RULON  
ALCM KOOL TUNES

**Ref. WLR Game of Thrones**

Lim-Flex (62) Bull	HP/HB	BJLR 499Y				LFM 2013659				12.23.11				
CED	BW	WW	YW	MA	CEM	SC	ST	DOC	CW	RE	YG	MS	\$MTI	
EPD	7	2.4	73	111	17	6	0.60	13	10	39	0.69	-0.10	0.32	64.61
%Rank	55	65	20	20	95	20	45	40	65	75	15	20	25	20

MAGS WIGGLER

WLR URSULA 499U

WULFS TITUS 2149T  
MAGS SNICKERS  
G A R PRECISION 706  
MAGS PHANTOMS PRIZE



TW Fire N' Ice

**Ref. AUTO Will Power 160X**

Lim-Flex (37) Bull	HP/HB	AUTO 160X				LFM 1980421				09.12.10				
CED	BW	WW	YW	MA	CEM	SC	ST	DOC	CW	RE	YG	MS	\$MTI	
EPD	8	1.3	65	103	23	5	0.80	15	5	33	0.40	0.03	1.01	86.07
%Rank	45	45	45	35	60	55	25	40	90	35	65	90	2	3

G A R PREDESTINED

AUTO REBECA 292S

B/R NEW DESIGN 036  
G A R EXT 4206  
LESF ASPHALT 9N  
EXLR REBECA 1019P

**Ref. TW Fire N' Ice**

Lim-Flex (75) Bull	DP/HB	BTCW 150X				LFM 1971882				04.20.10				
CED	BW	WW	YW	MA	CEM	SC	ST	DOC	CW	RE	YG	MS	\$MTI	
EPD	8	1.2	75	115	30	9	0.60	13	26	39	0.53	-0.04	0.16	58.94
%Rank	45	45	15	15	20	15	40	65	15	15	40	75	35	30

BOHI TITLELIST 7050T

MAGS UPPER SAUNTER

AUTO DOLLAR GENERAL 122R  
CARROUSELS PINA COLADA  
BERMILION E BLACKBIRD 9546  
MAGS SAUNTER



BOHI Top Dollar 7114T

**Ref. BOHI Top Dollar 7144T**

PB Limousin (100) Bull	HP/HB	BOHI 7144T				NPM 1905967				03.24.07				
CED	BW	WW	YW	MA	CEM	SC	ST	DOC	CW	RE	YG	MS	\$MTI	
EPD	8	2.9	69	109	29	4	0.60	12	15	39	0.29	0.05	0.39	64.67
%Rank	50	80	30	20	20	80	45	85	65	15	85	95	15	15

AUTO DOLLAR GENERAL 122R

CARROUSELS PINA COLADA

LVLS SECRET WEAPON 4408K  
AUTO KYRIA 232K  
AUTO BLACK DAKOTA 129J  
ELMW GINNIE P58G

**Ref. MAGS Utley**

Lim-Flex (37) Bull	HP/HB	MAGS 1740U				LFM 1906496				01.01.08				
CED	BW	WW	YW	MA	CEM	SC	ST	DOC	CW	RE	YG	MS	\$MTI	
EPD	10	1.5	65	100	34	4	0.90	20	11	31	.16	0.02	0.91	82.47
%Rank	30	50	45	40	10	70	20	10	70	40	95	90	4	4

G A R PREDESTINED

EXLR 199H

B/R NEW DESNG 036  
G A R EXT 4206  
WULFS FANFARE 4055F  
EXLR 558F



MAGS Utley

**R&R**  
MARKETING  
1212 Laurel St, #1614  
Nashville, TN 37203

**FIRST CLASS  
PRE-SORTED  
PAID**  
Montezuma, Iowa  
Permit No. 30

Catalog  
designed  
by  
  
designs by  
arin  
[www.designsbyarin.com](http://www.designsbyarin.com)

**October 24, 2015**  
**Beulaville, NC**

